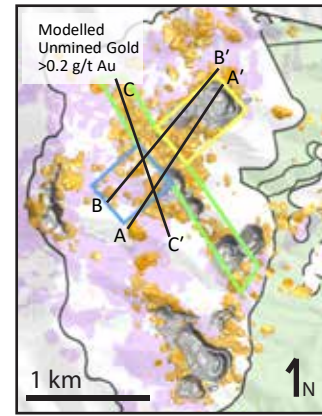
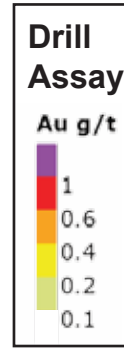
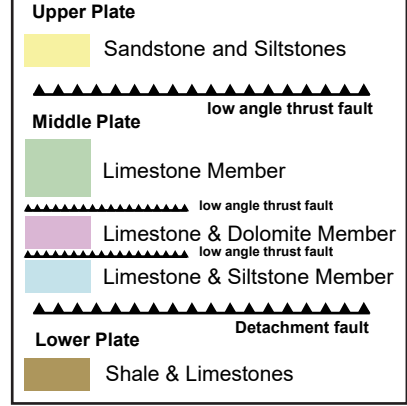


D-3 to D-2 Section Looking Northwest

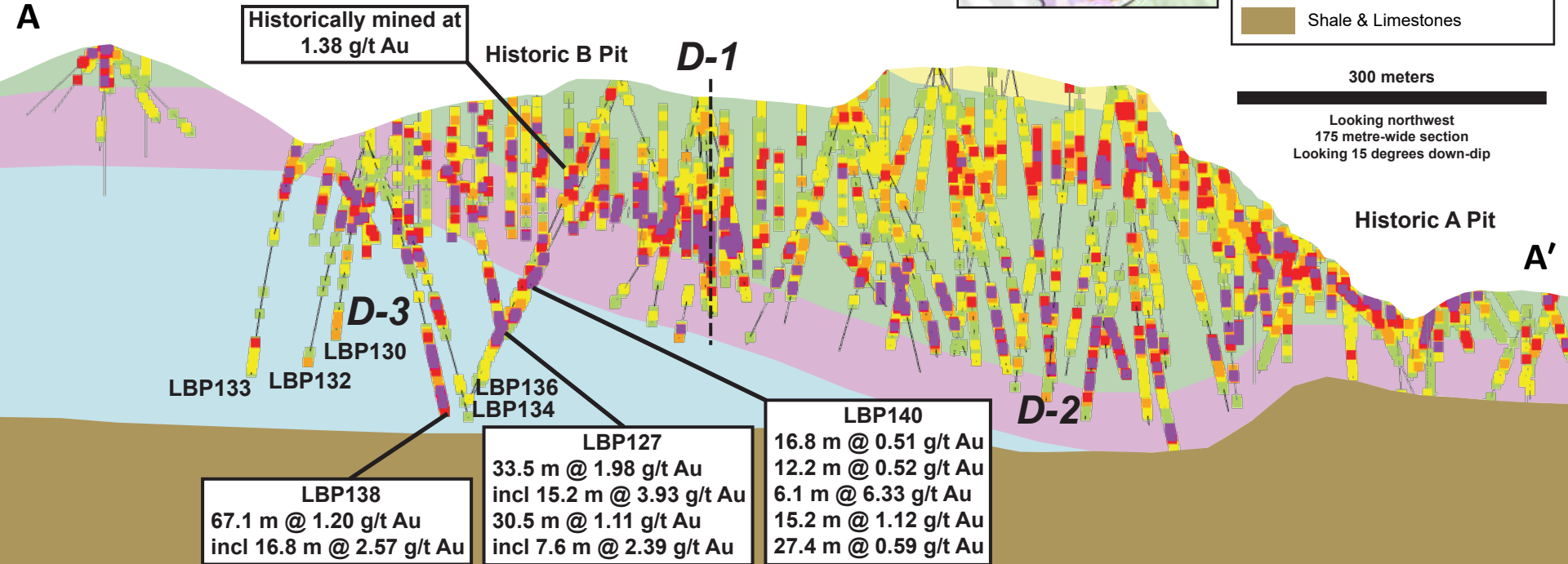


Black Pine Stratigraphy



300 meters

Looking northwest
175 metre-wide section
Looking 15 degrees down-dip

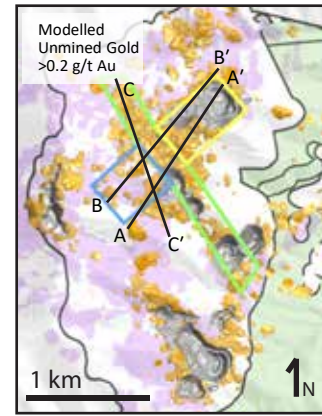
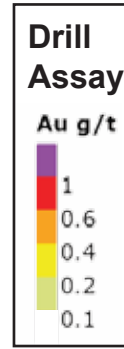


LBP138
67.1 m @ 1.20 g/t Au
incl 16.8 m @ 2.57 g/t Au

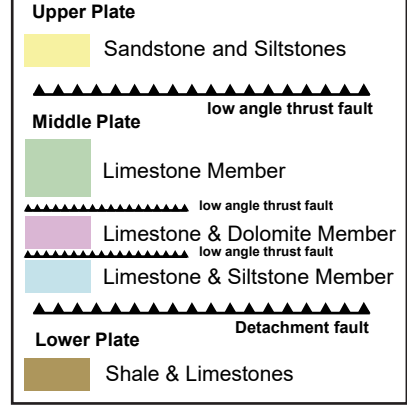
LBP127
33.5 m @ 1.98 g/t Au
incl 15.2 m @ 3.93 g/t Au
30.5 m @ 1.11 g/t Au
incl 7.6 m @ 2.39 g/t Au

LBP140
16.8 m @ 0.51 g/t Au
12.2 m @ 0.52 g/t Au
6.1 m @ 6.33 g/t Au
15.2 m @ 1.12 g/t Au
27.4 m @ 0.59 g/t Au

D-3 to D-2 Section Looking Northwest

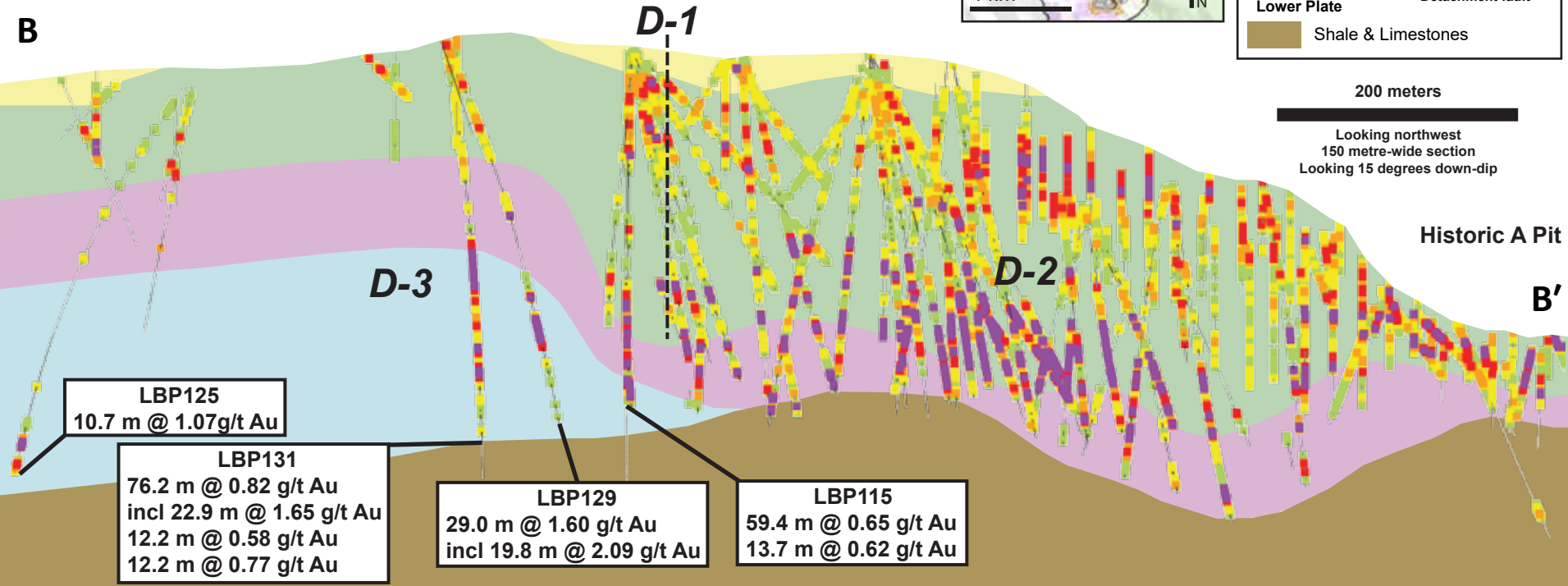


Black Pine Stratigraphy



200 meters

Looking northwest
150 metre-wide section
Looking 15 degrees down-dip



LBP125
10.7 m @ 1.07g/t Au

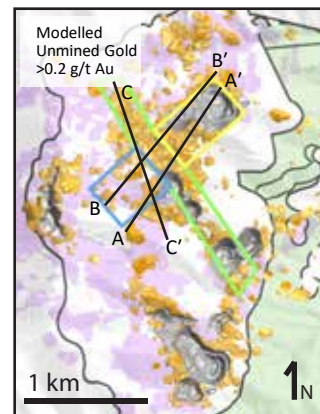
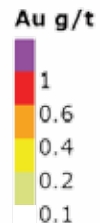
LBP131
76.2 m @ 0.82 g/t Au
incl 22.9 m @ 1.65 g/t Au
12.2 m @ 0.58 g/t Au
12.2 m @ 0.77 g/t Au

LBP129
29.0 m @ 1.60 g/t Au
incl 19.8 m @ 2.09 g/t Au

LBP115
59.4 m @ 0.65 g/t Au
13.7 m @ 0.62 g/t Au

D-3 Long Section Looking Northeast

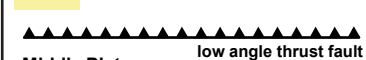
Drill Assay



Black Pine Stratigraphy

Upper Plate

Sandstone and Siltstones

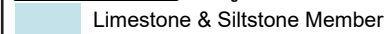


Middle Plate

Limestone Member



Limestone & Dolomite Member



Limestone & Siltstone Member



Lower Plate

Shale & Limestones

200 meters

Looking northeast
100 metre-wide section

