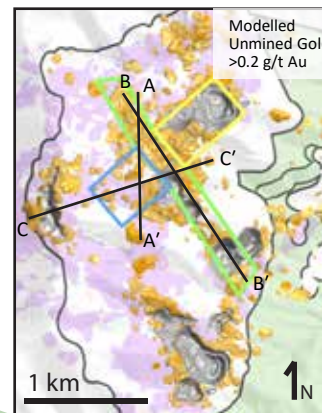
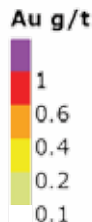
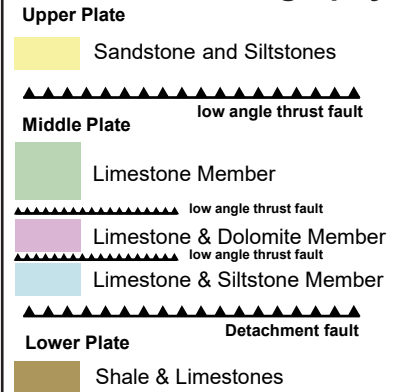


D-1 to D-3 Long Section Looking East

Drill Assay

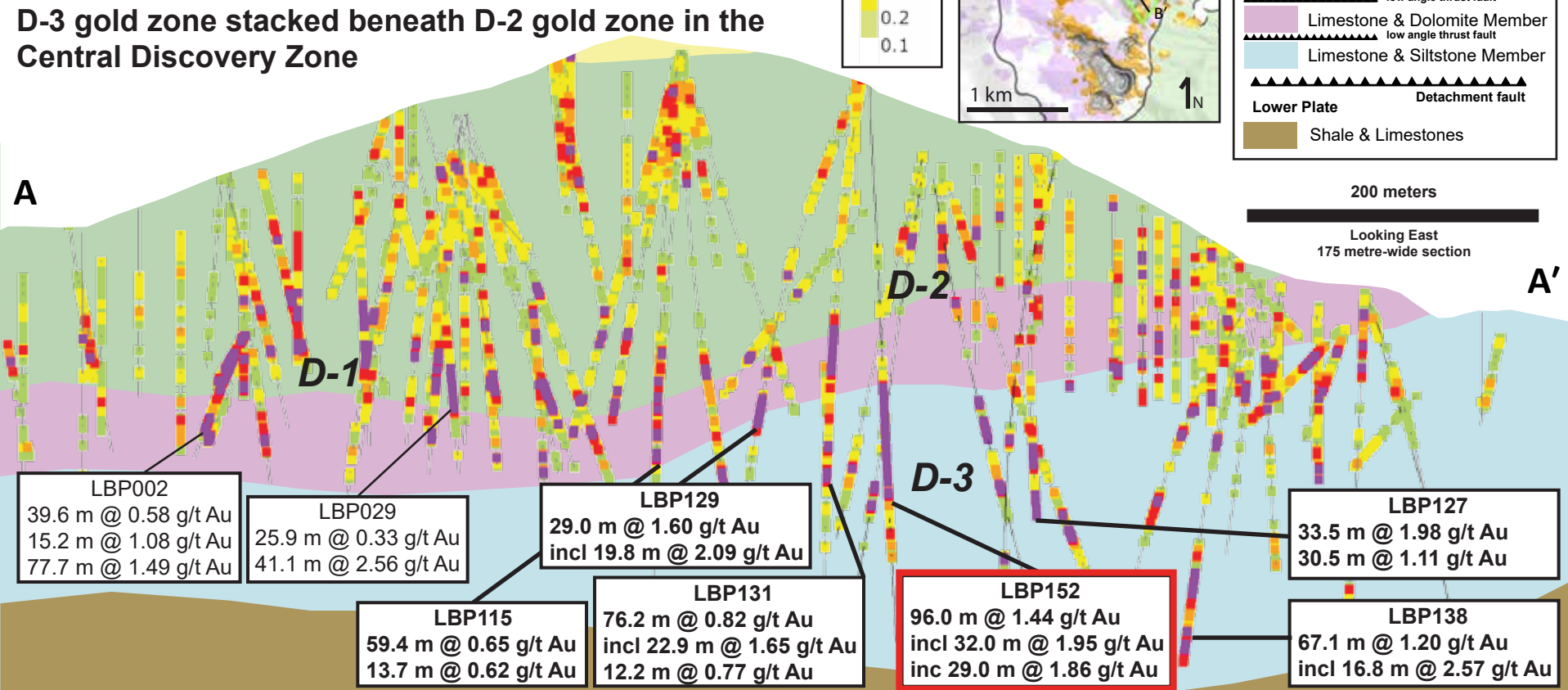


Black Pine Stratigraphy



200 meters

Looking East
175 metre-wide section



LBP002
39.6 m @ 0.58 g/t Au
15.2 m @ 1.08 g/t Au
77.7 m @ 1.49 g/t Au

LBP029
25.9 m @ 0.33 g/t Au
41.1 m @ 2.56 g/t Au

LBP129
29.0 m @ 1.60 g/t Au
incl 19.8 m @ 2.09 g/t Au

LBP115
59.4 m @ 0.65 g/t Au
13.7 m @ 0.62 g/t Au

LBP131
76.2 m @ 0.82 g/t Au
incl 22.9 m @ 1.65 g/t Au
12.2 m @ 0.77 g/t Au

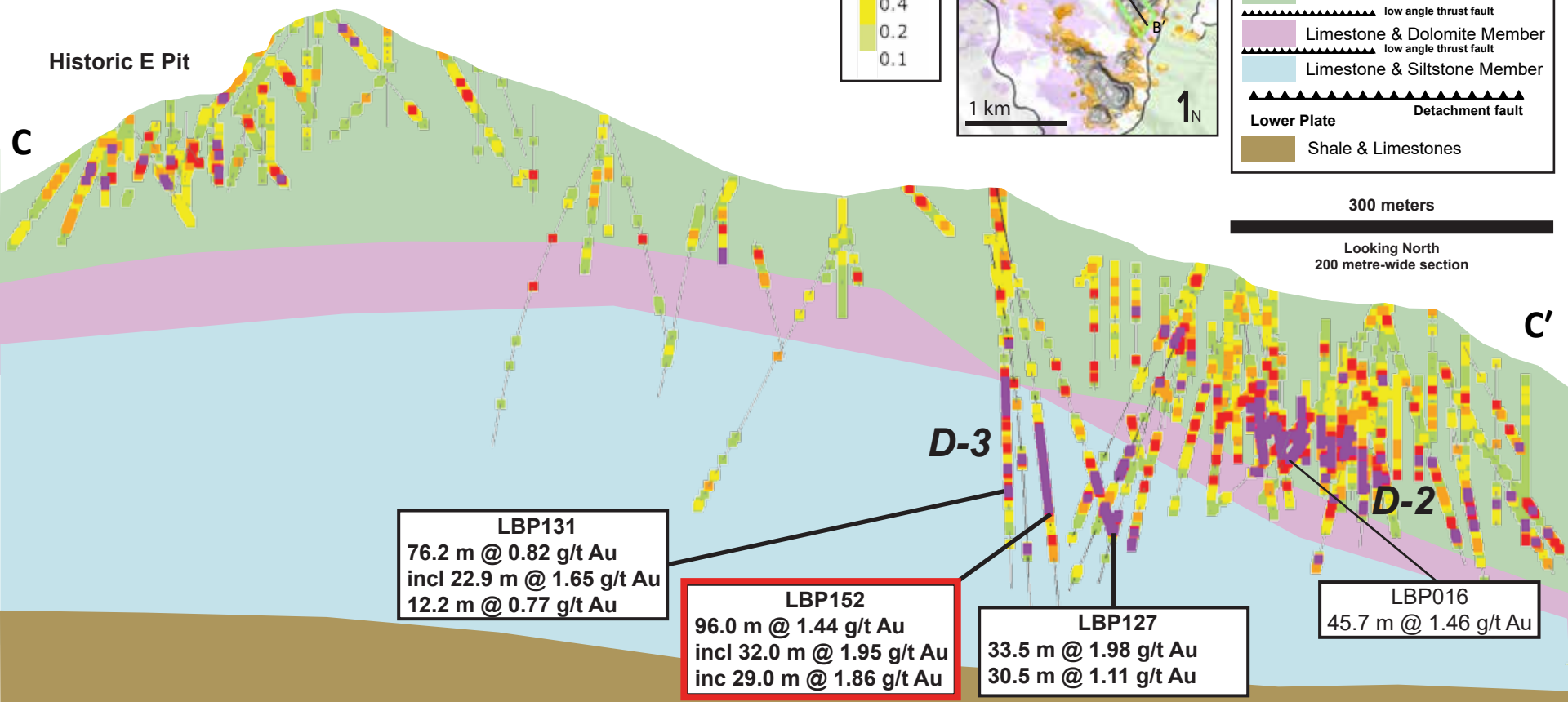
LBP152
96.0 m @ 1.44 g/t Au
incl 32.0 m @ 1.95 g/t Au
inc 29.0 m @ 1.86 g/t Au

LBP127
33.5 m @ 1.98 g/t Au
30.5 m @ 1.11 g/t Au

LBP138
67.1 m @ 1.20 g/t Au
incl 16.8 m @ 2.57 g/t Au

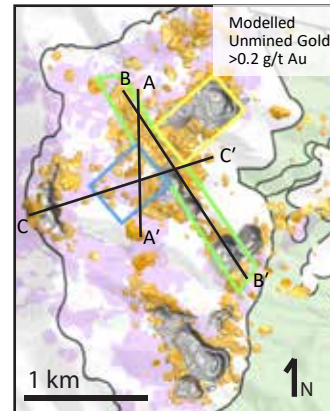
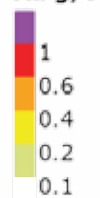
D-3 to D-2 Section Looking North

D-3 gold zone stacked beneath D-2 gold zone in the Central Discovery Zone and open in all directions



Drill Assay

Au g/t



Black Pine Stratigraphy

Upper Plate

Sandstone and Siltstones

low angle thrust fault

Middle Plate

Limestone Member

low angle thrust fault

Limestone & Dolomite Member

low angle thrust fault

Limestone & Siltstone Member

Detachment fault

Lower Plate

Shale & Limestones

300 meters

Looking North
200 metre-wide section

D-1 Long Section Looking Northeast

LBP150 and nearby drilling is stepping out to northwest from open gold mineralization in Tallman Pit towards 2019 D-1 Discovery and historic B Pit mineralization

