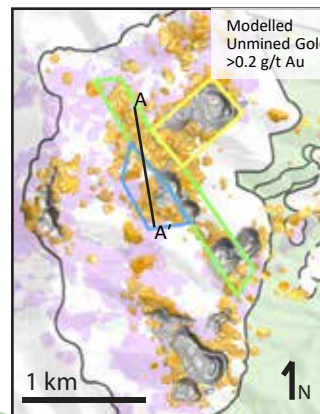
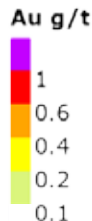
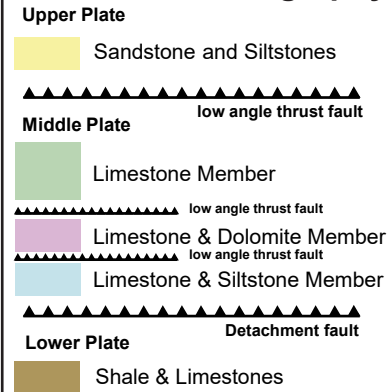


## D-1 to D-3 Long Section Looking East

### Drill Assay

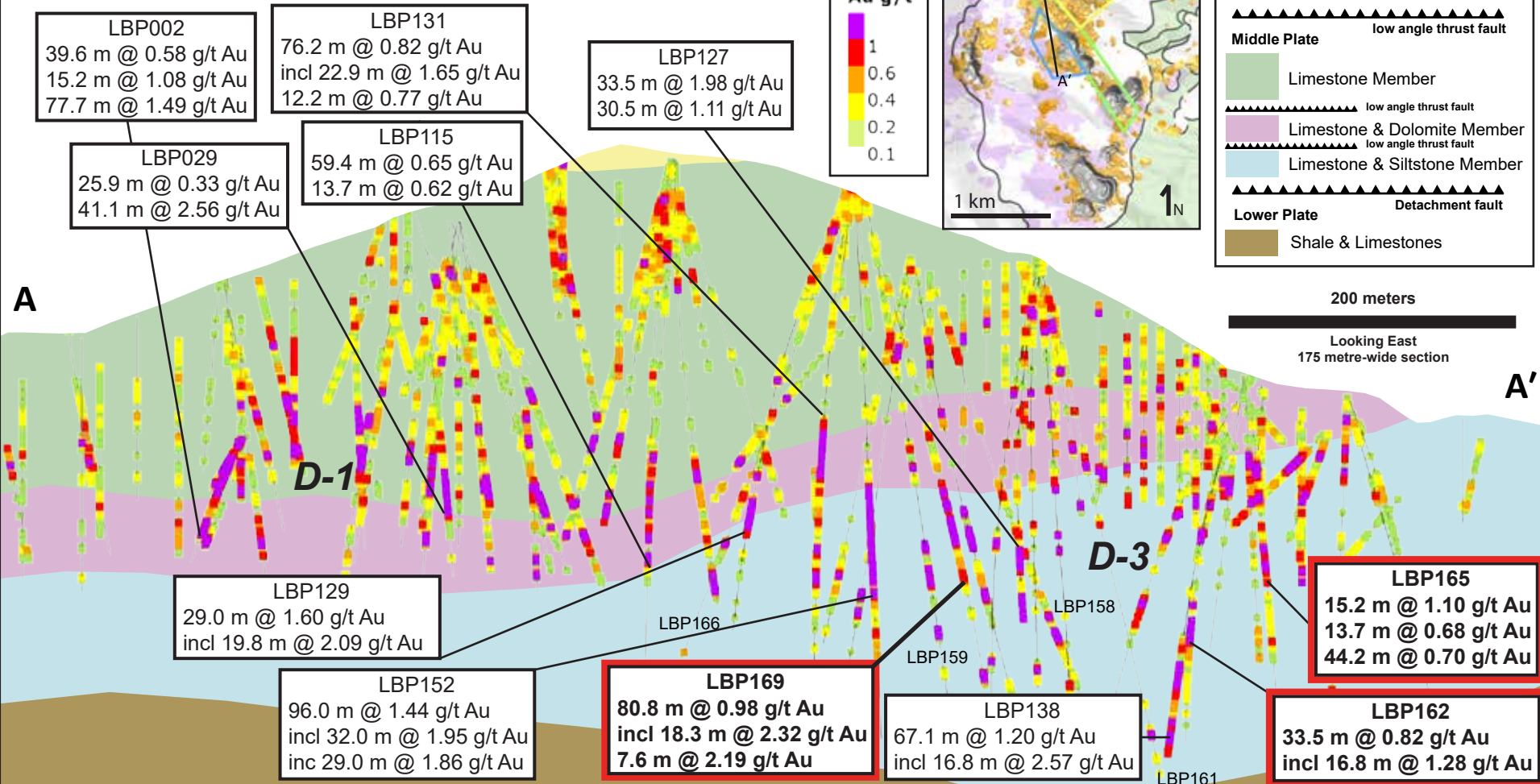


### Black Pine Stratigraphy



200 meters

Looking East  
175 metre-wide section



**LBP002**  
39.6 m @ 0.58 g/t Au  
15.2 m @ 1.08 g/t Au  
77.7 m @ 1.49 g/t Au

**LBP131**  
76.2 m @ 0.82 g/t Au  
incl 22.9 m @ 1.65 g/t Au  
12.2 m @ 0.77 g/t Au

**LBP127**  
33.5 m @ 1.98 g/t Au  
30.5 m @ 1.11 g/t Au

**LBP029**  
25.9 m @ 0.33 g/t Au  
41.1 m @ 2.56 g/t Au

**LBP115**  
59.4 m @ 0.65 g/t Au  
13.7 m @ 0.62 g/t Au

**LBP129**  
29.0 m @ 1.60 g/t Au  
incl 19.8 m @ 2.09 g/t Au

**LBP152**  
96.0 m @ 1.44 g/t Au  
incl 32.0 m @ 1.95 g/t Au  
inc 29.0 m @ 1.86 g/t Au

**LBP169**  
80.8 m @ 0.98 g/t Au  
incl 18.3 m @ 2.32 g/t Au  
7.6 m @ 2.19 g/t Au

**LBP138**  
67.1 m @ 1.20 g/t Au  
incl 16.8 m @ 2.57 g/t Au

**LBP165**  
15.2 m @ 1.10 g/t Au  
13.7 m @ 0.68 g/t Au  
44.2 m @ 0.70 g/t Au

**LBP162**  
33.5 m @ 0.82 g/t Au  
incl 16.8 m @ 1.28 g/t Au

LBP166

LBP159

LBP158

LBP161