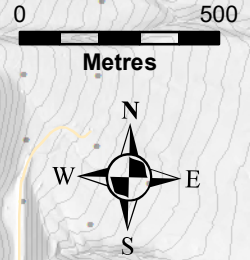


Black Pine Project 2020 Drill Results

- Collars Current Release
 - Discovery Focus Area
- Drill Assays**
- Gold g/t**
- 0 - 0.2
 - 0.2 - 0.4
 - 0.4 - 0.6
 - 0.6 - 1.0
 - 1.0 - 23.7
- Drill Permit Boundary
 - Road & Pad Outlines



LBP263
 16.8 m @ 0.91 g/t Au
 38.1 m @ 0.57 g/t Au
 6.1 m @ 2.99 g/t Au
 25.9 m @ 0.53 g/t Au

LBP256
 9.1 m @ 0.51 g/t Au
 38.1 m @ 1.26 g/t Au

LBP259
 44.2 m @ 1.14 g/t Au
 inc 19.8 m @ 1.91 g/t Au

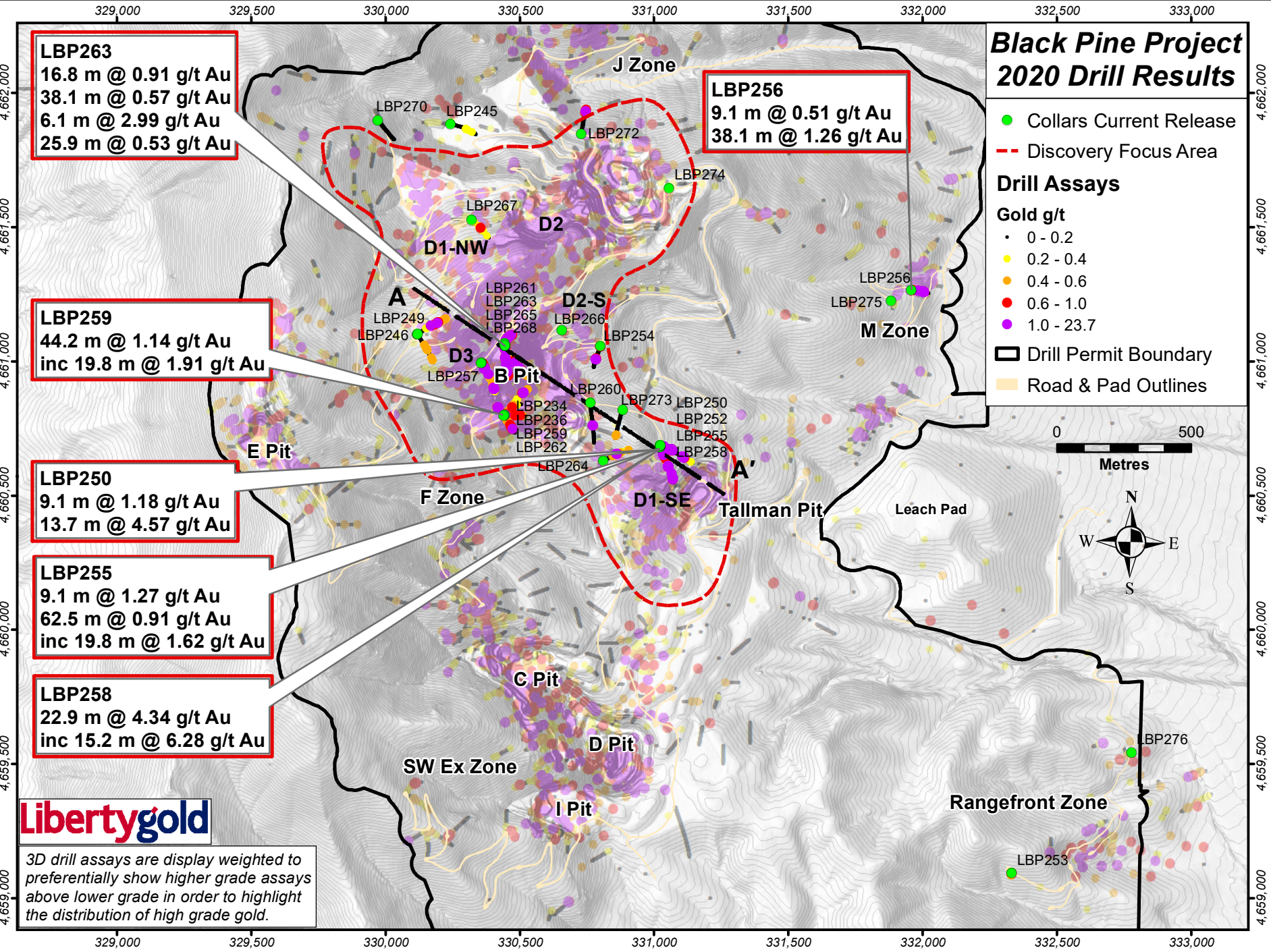
LBP250
 9.1 m @ 1.18 g/t Au
 13.7 m @ 4.57 g/t Au

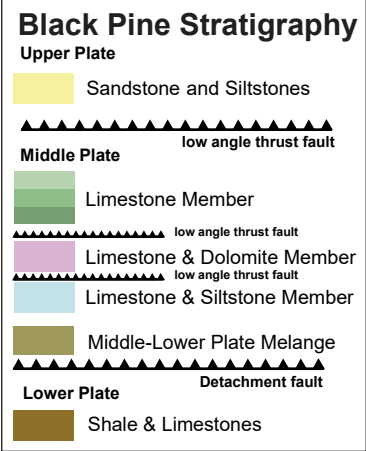
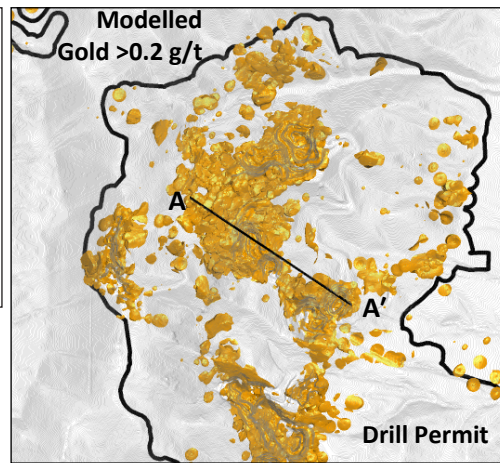
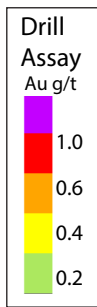
LBP255
 9.1 m @ 1.27 g/t Au
 62.5 m @ 0.91 g/t Au
 inc 19.8 m @ 1.62 g/t Au

LBP258
 22.9 m @ 4.34 g/t Au
 inc 15.2 m @ 6.28 g/t Au



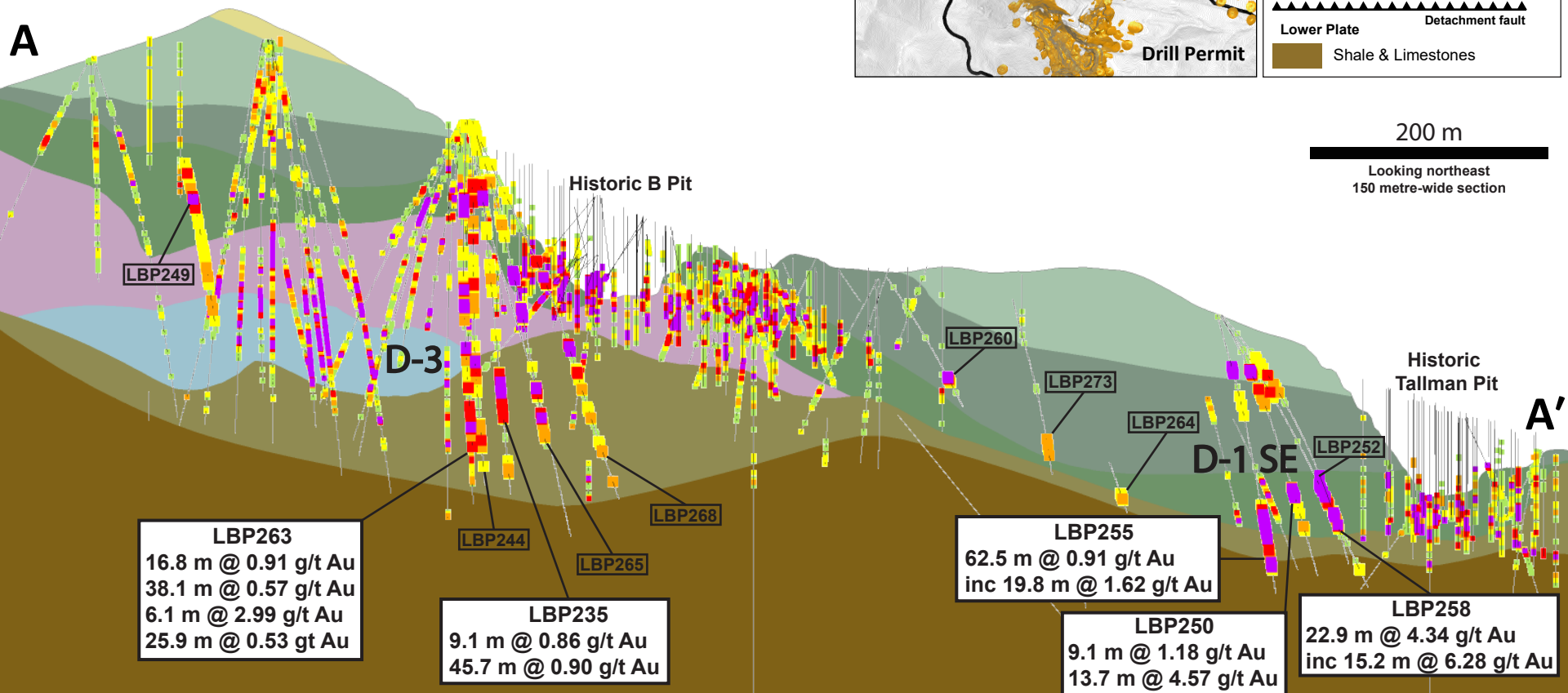
3D drill assays are display weighted to preferentially show higher grade assays above lower grade in order to highlight the distribution of high grade gold.





200 m

Looking northeast
150 metre-wide section



LBP263
16.8 m @ 0.91 g/t Au
38.1 m @ 0.57 g/t Au
6.1 m @ 2.99 g/t Au
25.9 m @ 0.53 g/t Au

LBP235
9.1 m @ 0.86 g/t Au
45.7 m @ 0.90 g/t Au

LBP255
62.5 m @ 0.91 g/t Au
inc 19.8 m @ 1.62 g/t Au

LBP250
9.1 m @ 1.18 g/t Au
13.7 m @ 4.57 g/t Au

LBP258
22.9 m @ 4.34 g/t Au
inc 15.2 m @ 6.28 g/t Au