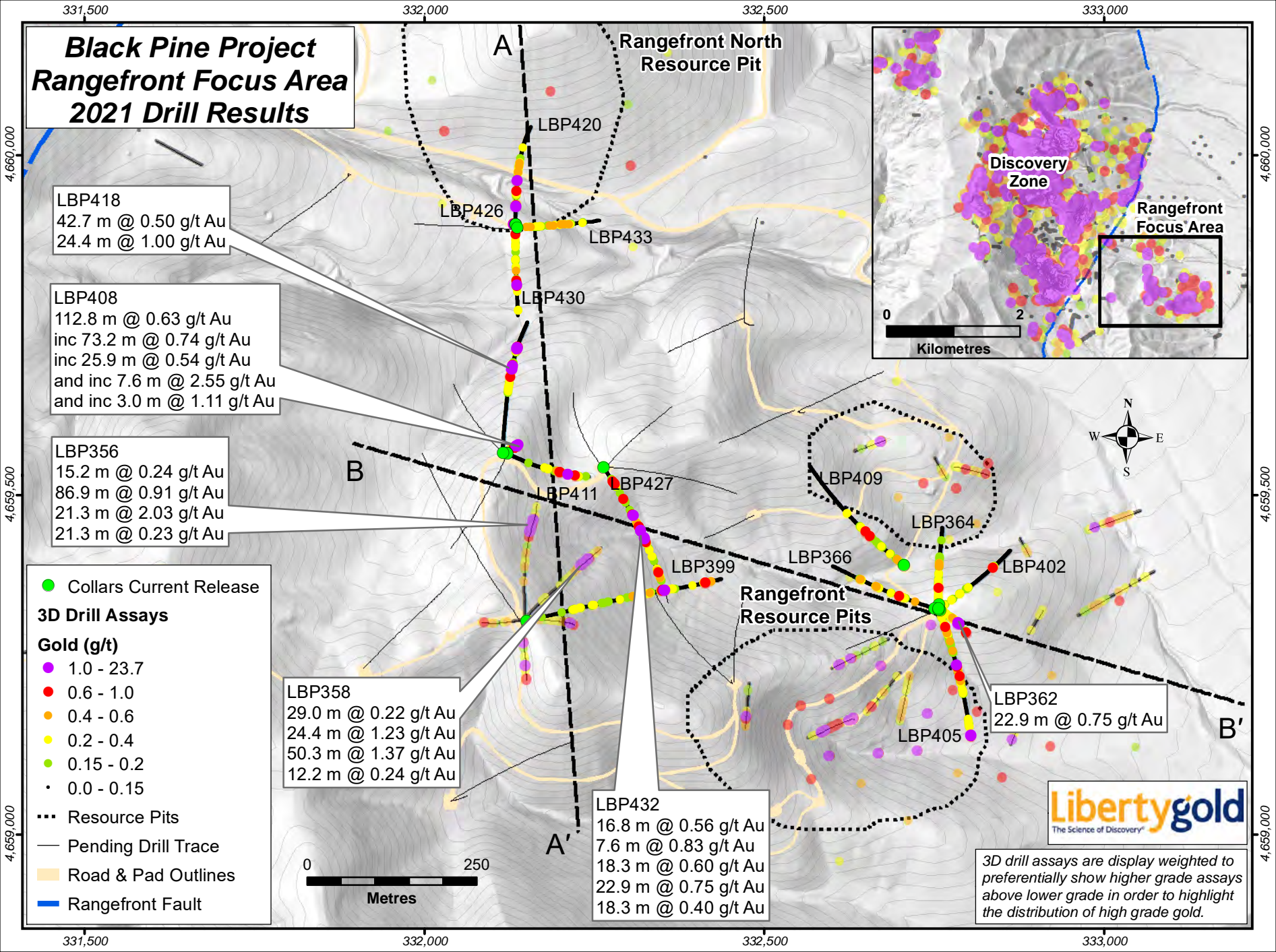


# Black Pine Project Rangefront Focus Area 2021 Drill Results



**LBP418**  
42.7 m @ 0.50 g/t Au  
24.4 m @ 1.00 g/t Au

**LBP408**  
112.8 m @ 0.63 g/t Au  
inc 73.2 m @ 0.74 g/t Au  
inc 25.9 m @ 0.54 g/t Au  
and inc 7.6 m @ 2.55 g/t Au  
and inc 3.0 m @ 1.11 g/t Au

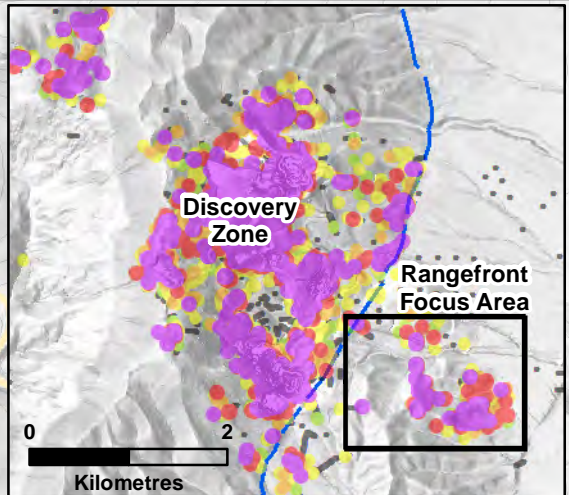
**LBP356**  
15.2 m @ 0.24 g/t Au  
86.9 m @ 0.91 g/t Au  
21.3 m @ 2.03 g/t Au  
21.3 m @ 0.23 g/t Au

**LBP358**  
29.0 m @ 0.22 g/t Au  
24.4 m @ 1.23 g/t Au  
50.3 m @ 1.37 g/t Au  
12.2 m @ 0.24 g/t Au

**LBP432**  
16.8 m @ 0.56 g/t Au  
7.6 m @ 0.83 g/t Au  
18.3 m @ 0.60 g/t Au  
22.9 m @ 0.75 g/t Au  
18.3 m @ 0.40 g/t Au

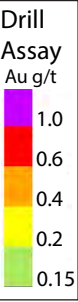
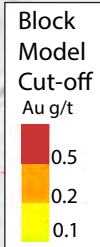
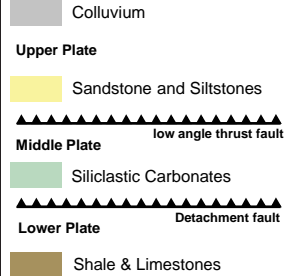
**LBP362**  
22.9 m @ 0.75 g/t Au

- Collars Current Release
- 3D Drill Assays**
- Gold (g/t)**
- 1.0 - 23.7
- 0.6 - 1.0
- 0.4 - 0.6
- 0.2 - 0.4
- 0.15 - 0.2
- 0.0 - 0.15
- Resource Pits
- Pending Drill Trace
- Road & Pad Outlines
- Rangefront Fault



*3D drill assays are display weighted to preferentially show higher grade assays above lower grade in order to highlight the distribution of high grade gold.*

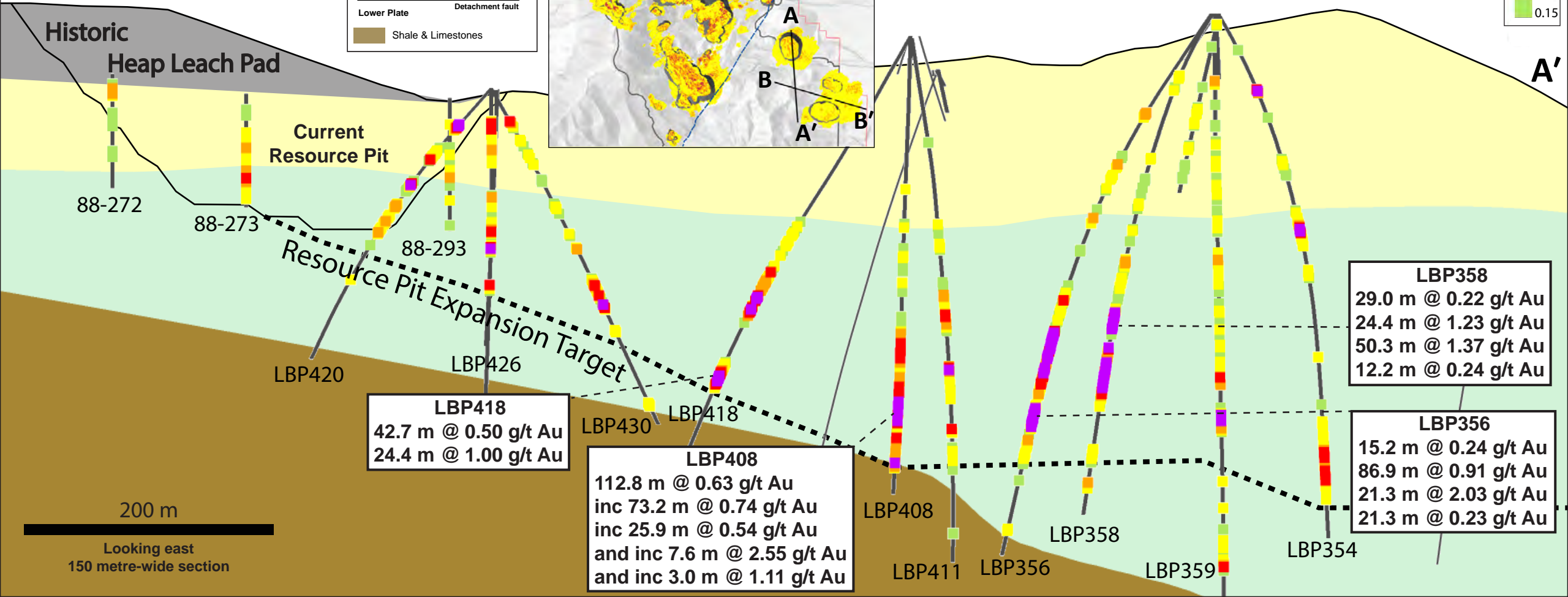
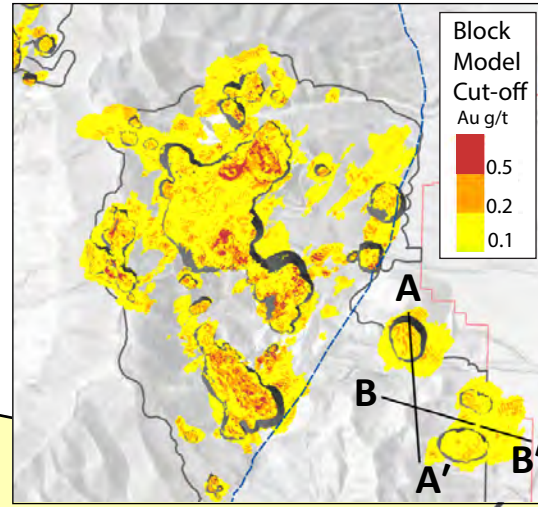
**Black Pine Stratigraphy**



**Black Pine  
Rangefront Focus Area  
2021 Drill Results**

**A**

**A'**



88-272

88-273

88-293

LBP420

LBP426

LBP430

**LBP418**  
42.7 m @ 0.50 g/t Au  
24.4 m @ 1.00 g/t Au

**LBP408**  
112.8 m @ 0.63 g/t Au  
inc 73.2 m @ 0.74 g/t Au  
inc 25.9 m @ 0.54 g/t Au  
and inc 7.6 m @ 2.55 g/t Au  
and inc 3.0 m @ 1.11 g/t Au

LBP408

LBP411

LBP356

LBP358

LBP359

LBP354

**LBP358**  
29.0 m @ 0.22 g/t Au  
24.4 m @ 1.23 g/t Au  
50.3 m @ 1.37 g/t Au  
12.2 m @ 0.24 g/t Au

**LBP356**  
15.2 m @ 0.24 g/t Au  
86.9 m @ 0.91 g/t Au  
21.3 m @ 2.03 g/t Au  
21.3 m @ 0.23 g/t Au

200 m

Looking east  
150 metre-wide section

# Black Pine Rangefront Focus Area 2021 Drill Results

