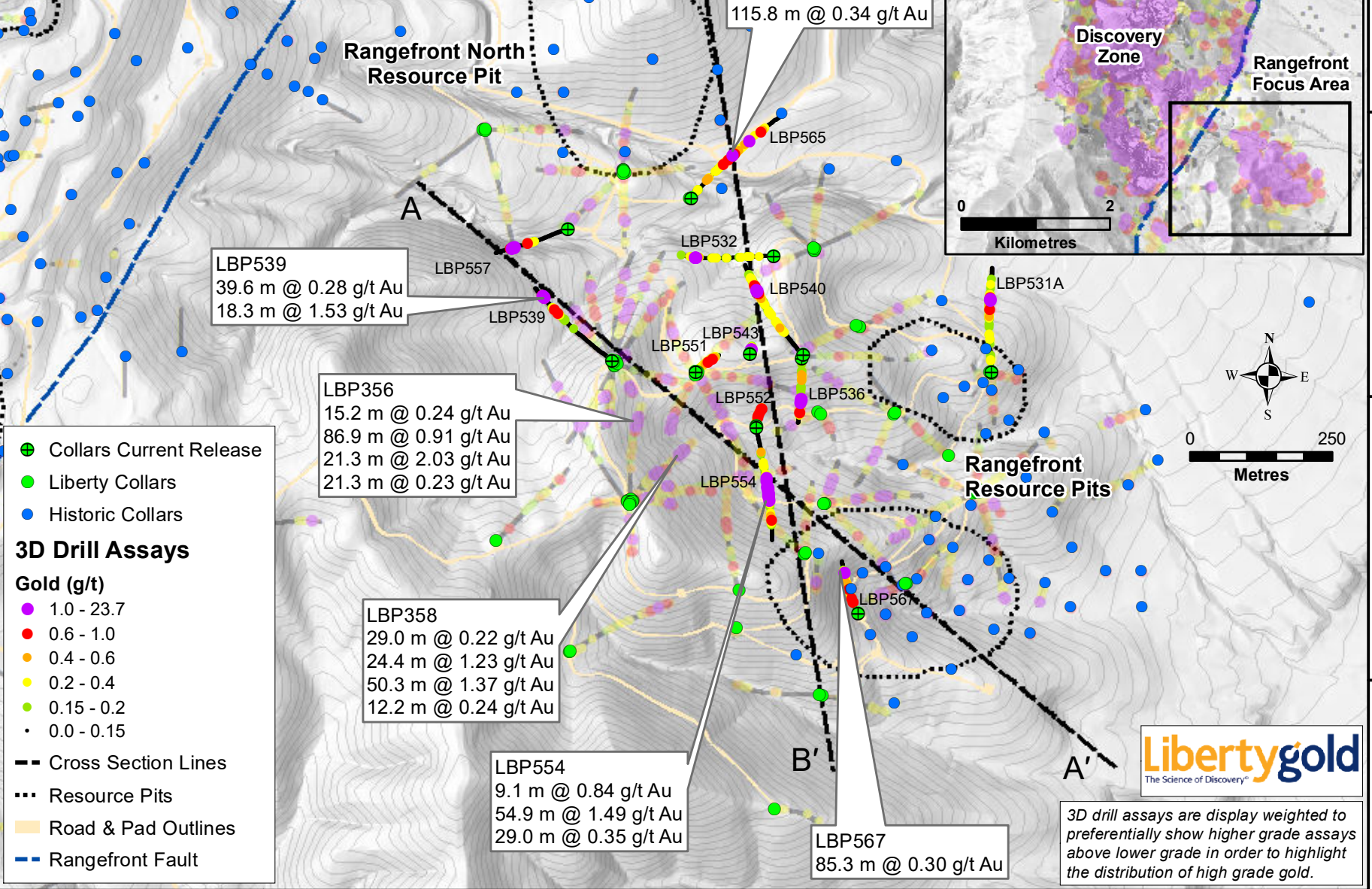


Black Pine Project Rangefront Focus Area 2022 Drill Results



Historic Leach Pad

Rangefront North
Resource Pit

LBP565
115.8 m @ 0.34 g/t Au

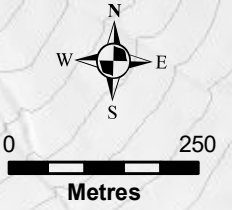
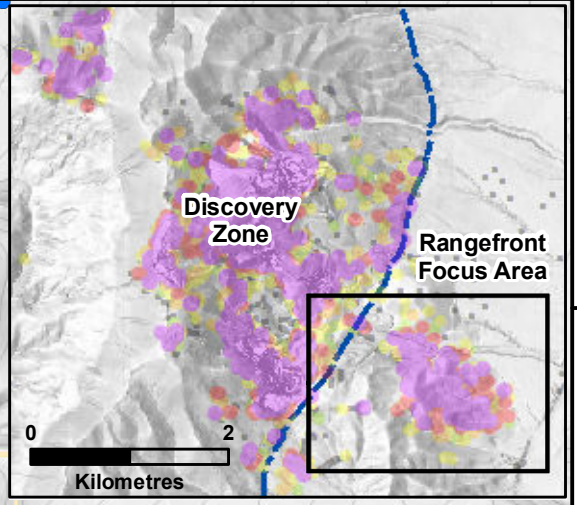
LBP539
39.6 m @ 0.28 g/t Au
18.3 m @ 1.53 g/t Au

LBP356
15.2 m @ 0.24 g/t Au
86.9 m @ 0.91 g/t Au
21.3 m @ 2.03 g/t Au
21.3 m @ 0.23 g/t Au

LBP358
29.0 m @ 0.22 g/t Au
24.4 m @ 1.23 g/t Au
50.3 m @ 1.37 g/t Au
12.2 m @ 0.24 g/t Au

LBP554
9.1 m @ 0.84 g/t Au
54.9 m @ 1.49 g/t Au
29.0 m @ 0.35 g/t Au

LBP567
85.3 m @ 0.30 g/t Au

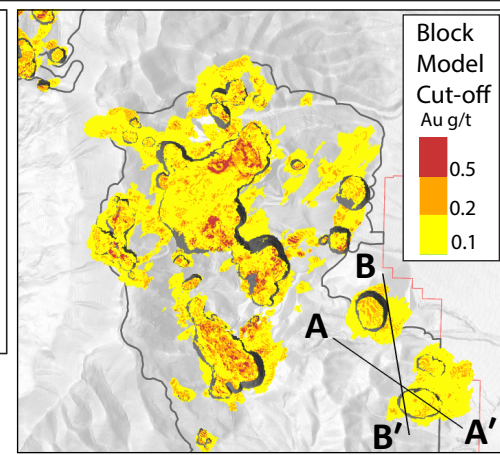
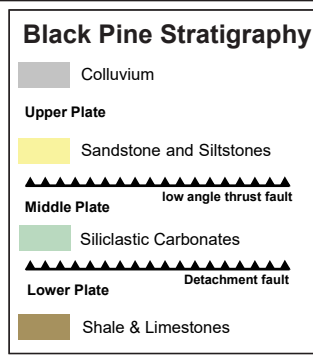
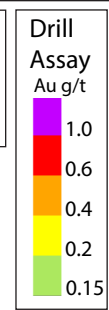


- Collars Current Release
 - Liberty Collars
 - Historic Collars
- ### 3D Drill Assays
- Gold (g/t)
- 1.0 - 23.7
 - 0.6 - 1.0
 - 0.4 - 0.6
 - 0.2 - 0.4
 - 0.15 - 0.2
 - 0.0 - 0.15
- Cross Section Lines
 - Resource Pits
 - Road & Pad Outlines
 - Rangefront Fault

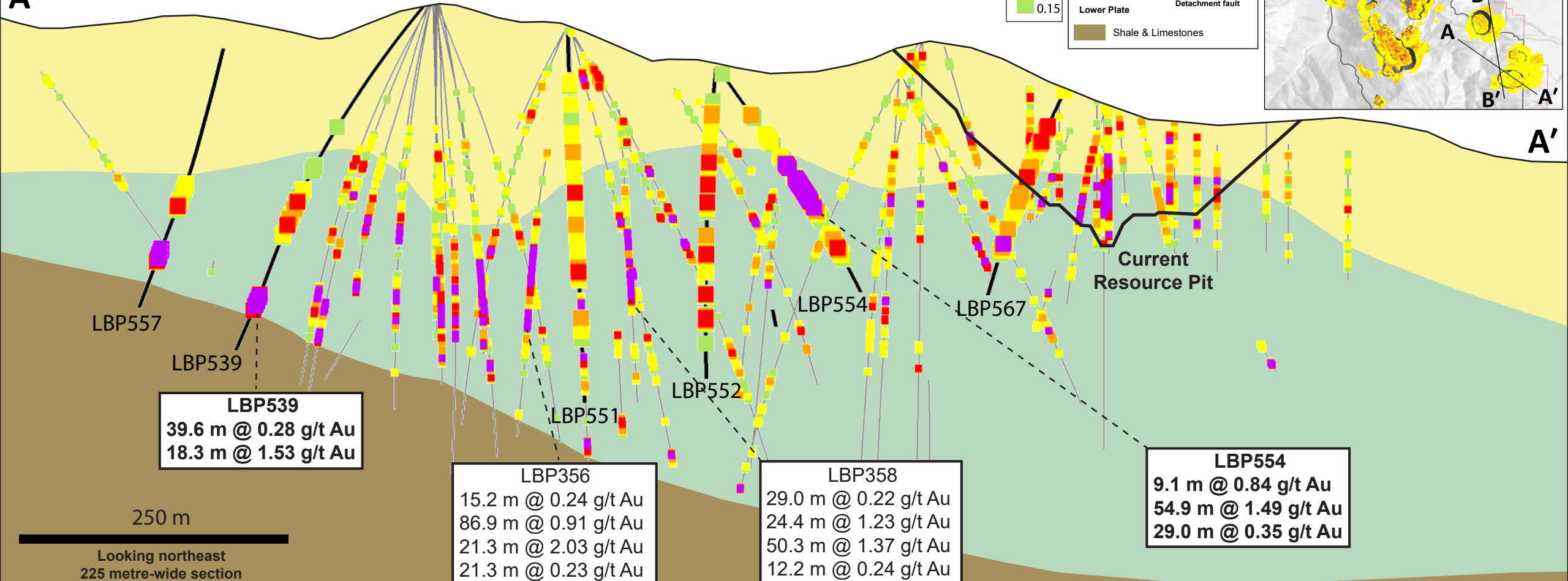


3D drill assays are display weighted to preferentially show higher grade assays above lower grade in order to highlight the distribution of high grade gold.

Black Pine Rangefront Focus Area Drill Results



A



A'

LBP539
39.6 m @ 0.28 g/t Au
18.3 m @ 1.53 g/t Au

LBP356
15.2 m @ 0.24 g/t Au
86.9 m @ 0.91 g/t Au
21.3 m @ 2.03 g/t Au
21.3 m @ 0.23 g/t Au

LBP358
29.0 m @ 0.22 g/t Au
24.4 m @ 1.23 g/t Au
50.3 m @ 1.37 g/t Au
12.2 m @ 0.24 g/t Au

LBP554
9.1 m @ 0.84 g/t Au
54.9 m @ 1.49 g/t Au
29.0 m @ 0.35 g/t Au

250 m
Looking northeast
225 metre-wide section

Black Pine Rangefront Focus Area Drill Results

