

## Drill Collars

- ⊕ Surficial Waste Rock Drilling
- ⊕ Metallurgical Core Drilling

### LBP661

38.1 m @ 0.26 g/t Au

### LBP456C

9.1 m @ 0.79 g/t Au  
26.2 m @ 0.71 g/t Au

### LBP485C

E Zone

### LBP659

Discovery Zone

### LBP429CA

### LBP530C

29.1 m @ 1.09 g/t Au

M Zone

F Zone

### LBP508C

21.2 m @ 4.80 g/t Au  
inc 15.2m @ 6.53 g/t Au

CD Zone

Rangefront Zone

### LBP489C

### LBP516CA

### LBP556C

30.9 m @ 0.53 g/t Au  
15.9 m @ 0.51 g/t Au

### LBP573C

### LBP499C

25.3 m @ 3.98 g/t Au  
inc 15.7m @ 5.99 g/t Au

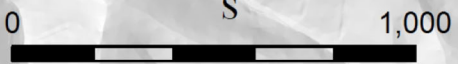
### LBP533C

### LBP541C

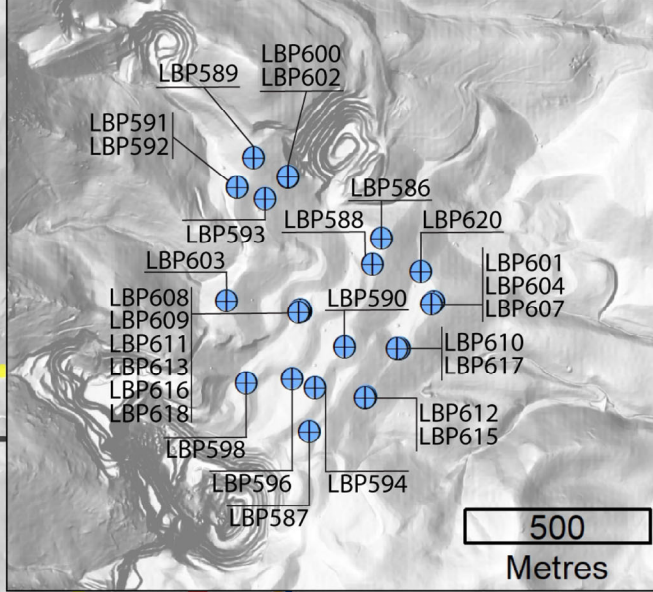
### LBP511CA

100.4 m @ 1.38 g/t Au

South Rangefront



Metres



## 3D Drill Assays

- Gold (g/t)
- 0 - 0.1
  - 0.1 - 0.2
  - 0.2 - 0.5
  - 0.5 - 1.0
  - 1.0 - 23.7
- Rangefront Fault

4,662,000

4,660,000

4,660,000

3D drill assays are display weighted to preferentially show higher grade assays above lower grade in order to highlight the distribution of high grade gold.

# Black Pine Oxide Gold Project Core and Surficial Waste Rock Drill Results