

# Black Pine Project Rangefront Focus Area 2021 Drill Results

**LBP522**  
15.2 m @ 0.84 g/t Au  
25.9 m @ 1.25 g/t Au

**LBP418**  
42.7 m @ 0.50 g/t Au  
24.4 m @ 1.00 g/t Au

**LBP473**  
9.1 m @ 0.52 g/t Au  
13.7 m @ 0.42 g/t Au  
41.1 m @ 1.95 g/t Au  
inc 10.8 m @ 4.43 g/t Au  
inc 9.1 m @ 2.95 g/t Au

**LBP514**  
85.3 m @ 0.98 g/t Au  
inc 27.4 m @ 1.56 g/t Au  
inc 7.6 m @ 2.47 g/t Au

**LBP356**  
15.2 m @ 0.24 g/t Au  
86.9 m @ 0.91 g/t Au  
21.3 m @ 2.03 g/t Au  
21.3 m @ 0.23 g/t Au

**LBP358**  
29.0 m @ 0.22 g/t Au  
24.4 m @ 1.23 g/t Au  
50.3 m @ 1.37 g/t Au  
12.2 m @ 0.24 g/t Au

- Collars Current Release
- Liberty Collars
- Historic Collars

## 3D Drill Assays

### Gold (g/t)

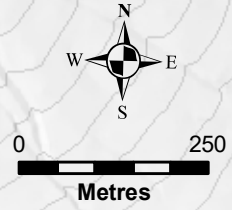
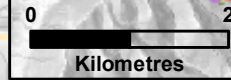
- 1.0 - 23.7
- 0.6 - 1.0
- 0.4 - 0.6
- 0.2 - 0.4
- 0.15 - 0.2
- 0.0 - 0.15

- Modelled 0.5 gram Au Core
- Cross Section Lines
- Resource Pits
- Road & Pad Outlines
- Rangefront Fault

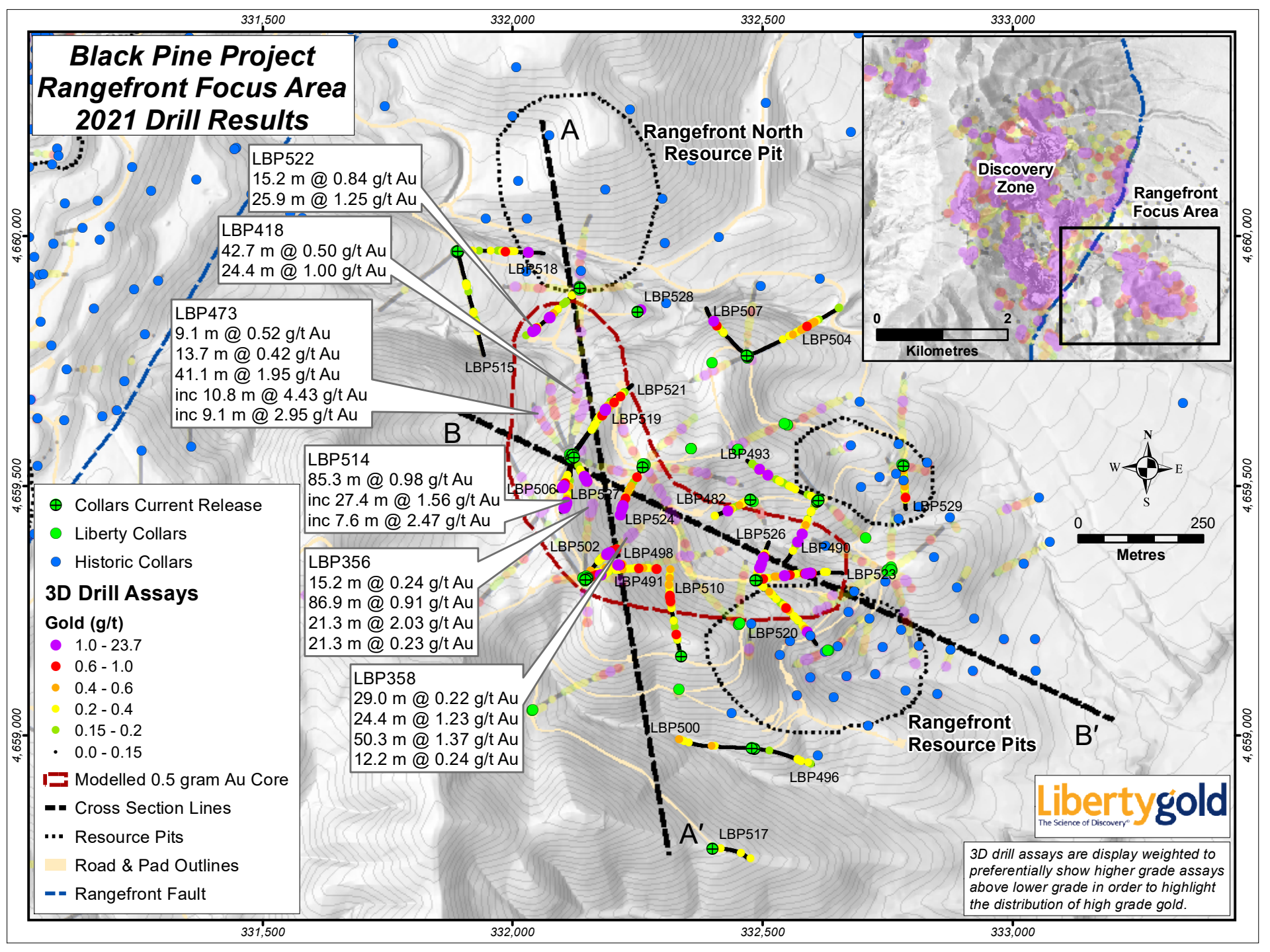
**Rangefront North  
Resource Pit**

**Discovery  
Zone**

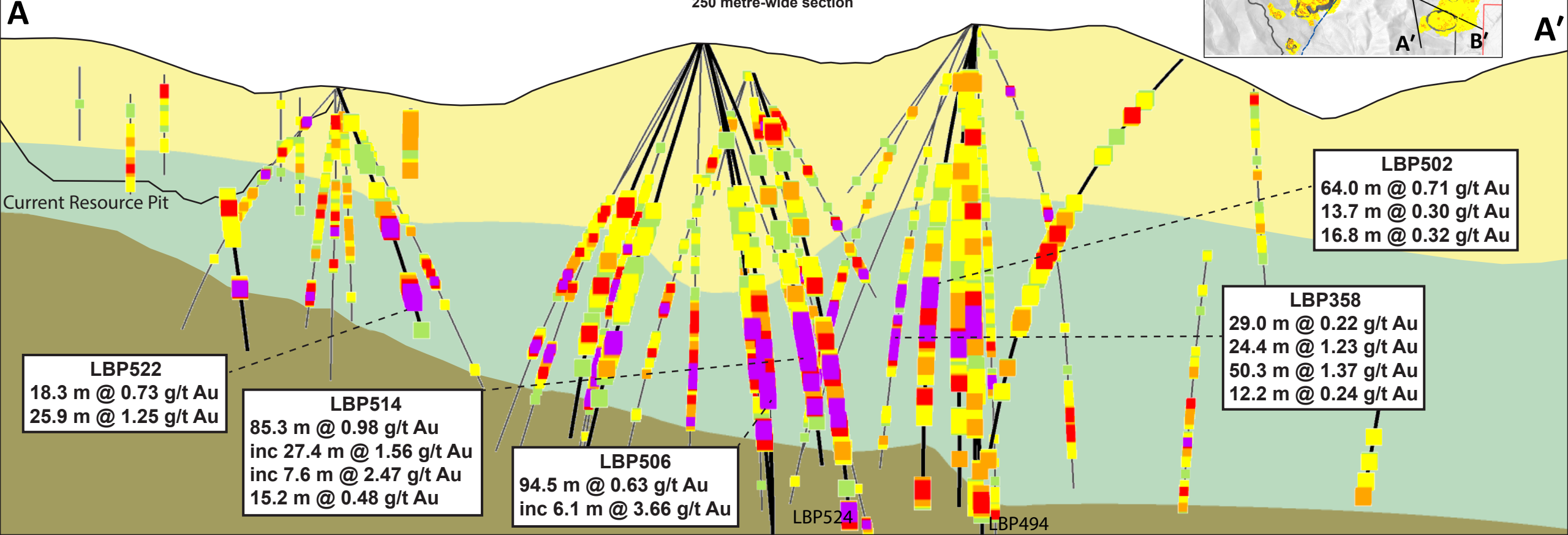
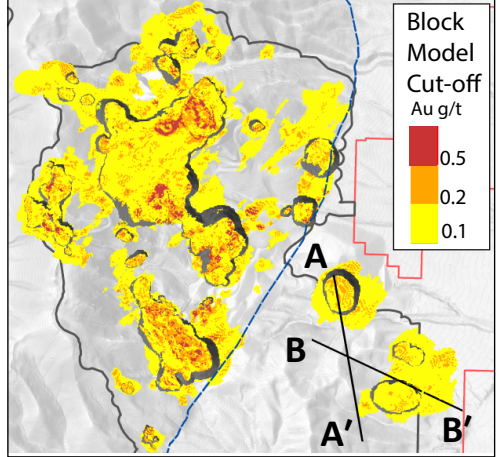
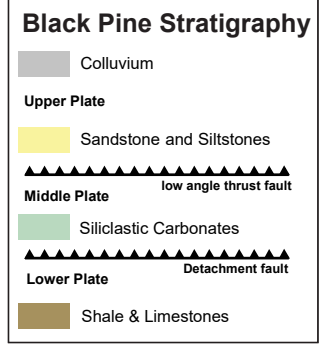
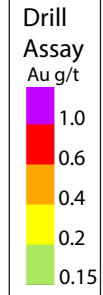
**Rangefront  
Focus Area**



*3D drill assays are display weighted to preferentially show higher grade assays above lower grade in order to highlight the distribution of high grade gold.*



# Black Pine Rangefront Focus Area Drill Results



**LBP522**  
18.3 m @ 0.73 g/t Au  
25.9 m @ 1.25 g/t Au

**LBP514**  
85.3 m @ 0.98 g/t Au  
inc 27.4 m @ 1.56 g/t Au  
inc 7.6 m @ 2.47 g/t Au  
15.2 m @ 0.48 g/t Au

**LBP506**  
94.5 m @ 0.63 g/t Au  
inc 6.1 m @ 3.66 g/t Au

**LBP502**  
64.0 m @ 0.71 g/t Au  
13.7 m @ 0.30 g/t Au  
16.8 m @ 0.32 g/t Au

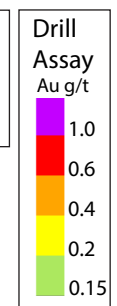
**LBP358**  
29.0 m @ 0.22 g/t Au  
24.4 m @ 1.23 g/t Au  
50.3 m @ 1.37 g/t Au  
12.2 m @ 0.24 g/t Au

LBP524  
LBP494

# Black Pine Rangefront Focus Area Drill Results

**Drill Trace Legend**

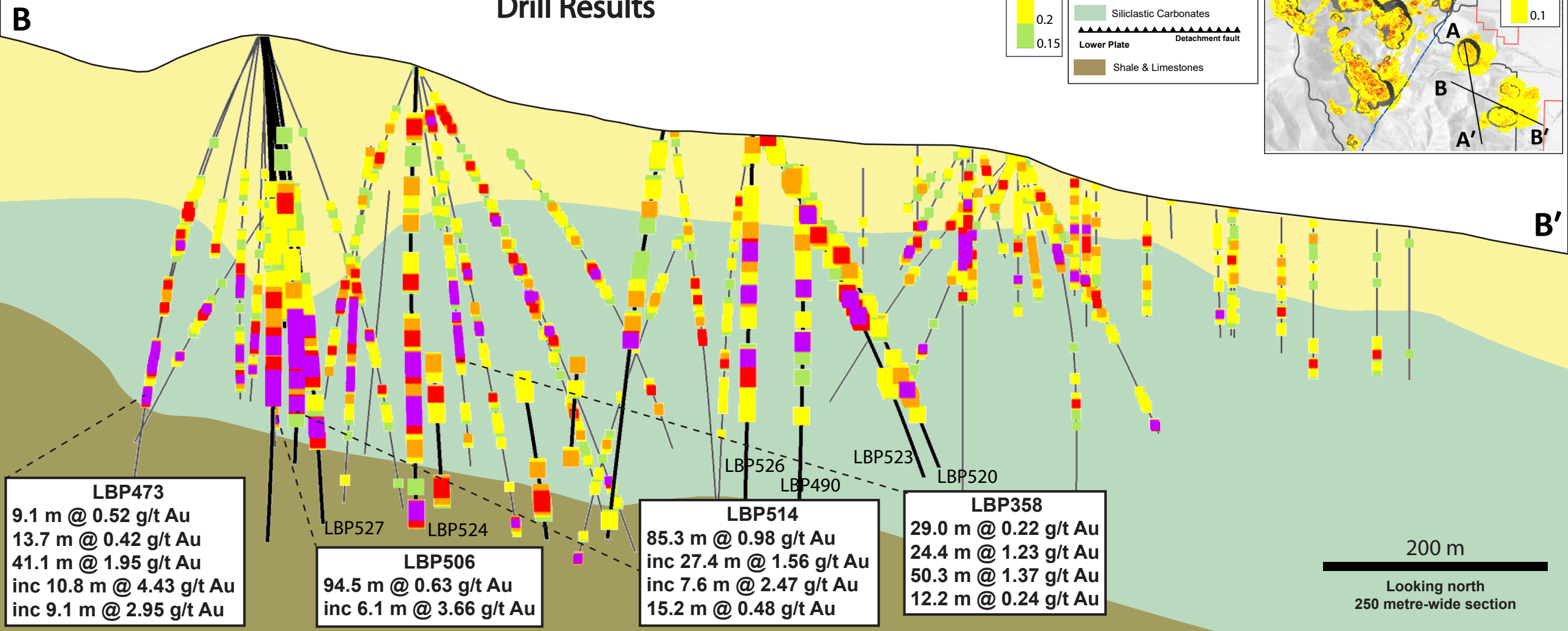
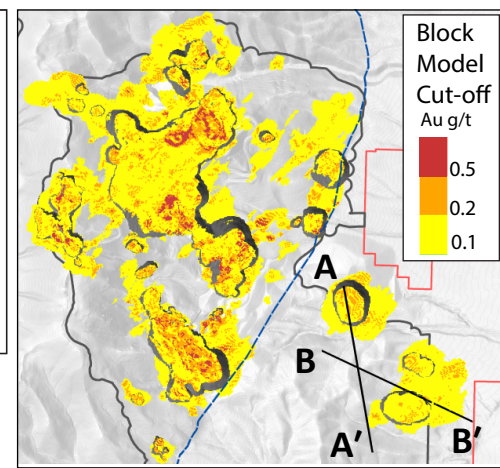
- Current Release
- - Previous Release & Historic Trace



**Black Pine Stratigraphy**

- Colluvium
- Upper Plate**
  - Sandstone and Siltstones
- Middle Plate**
  - Siliclastic Carbonates
- Lower Plate**
  - Shale & Limestones

low angle thrust fault  
Detachment fault



**LBP473**  
9.1 m @ 0.52 g/t Au  
13.7 m @ 0.42 g/t Au  
41.1 m @ 1.95 g/t Au  
inc 10.8 m @ 4.43 g/t Au  
inc 9.1 m @ 2.95 g/t Au

**LBP506**  
94.5 m @ 0.63 g/t Au  
inc 6.1 m @ 3.66 g/t Au

**LBP514**  
85.3 m @ 0.98 g/t Au  
inc 27.4 m @ 1.56 g/t Au  
inc 7.6 m @ 2.47 g/t Au  
15.2 m @ 0.48 g/t Au

**LBP358**  
29.0 m @ 0.22 g/t Au  
24.4 m @ 1.23 g/t Au  
50.3 m @ 1.37 g/t Au  
12.2 m @ 0.24 g/t Au

200 m  
Looking north  
250 metre-wide section