

Black Pine Project Drill Results



LBP487
39.6 m @ 0.69 g/t Au
39.6 m @ 1.48 g/t Au
inc 15.2 m @ 3.34 g/t Au

LBP473
9.1 m @ 0.52 g/t Au
13.7 m @ 0.42 g/t Au
41.1 m @ 1.95 g/t Au
inc 10.8 m @ 4.43 g/t Au
inc 9.1 m @ 2.95 g/t Au

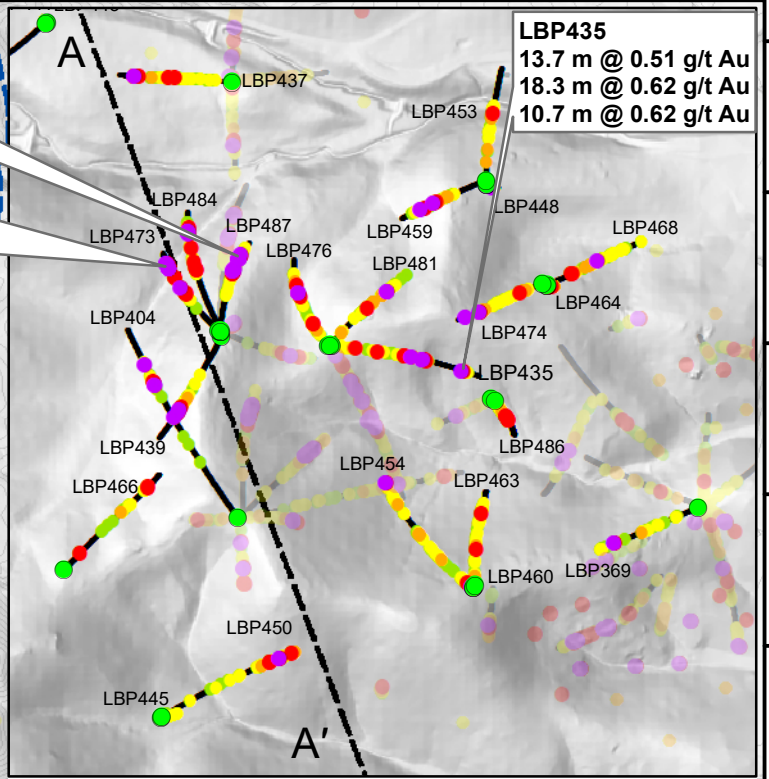
LBP435
13.7 m @ 0.51 g/t Au
18.3 m @ 0.62 g/t Au
10.7 m @ 0.62 g/t Au

**Discovery
Focus Area**

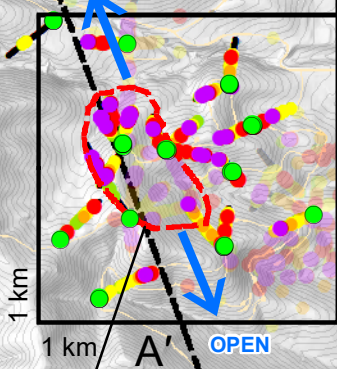
1 km
1 km

Rangefront Fault

Historic
Leach Pad



**Rangefront
Focus Area**

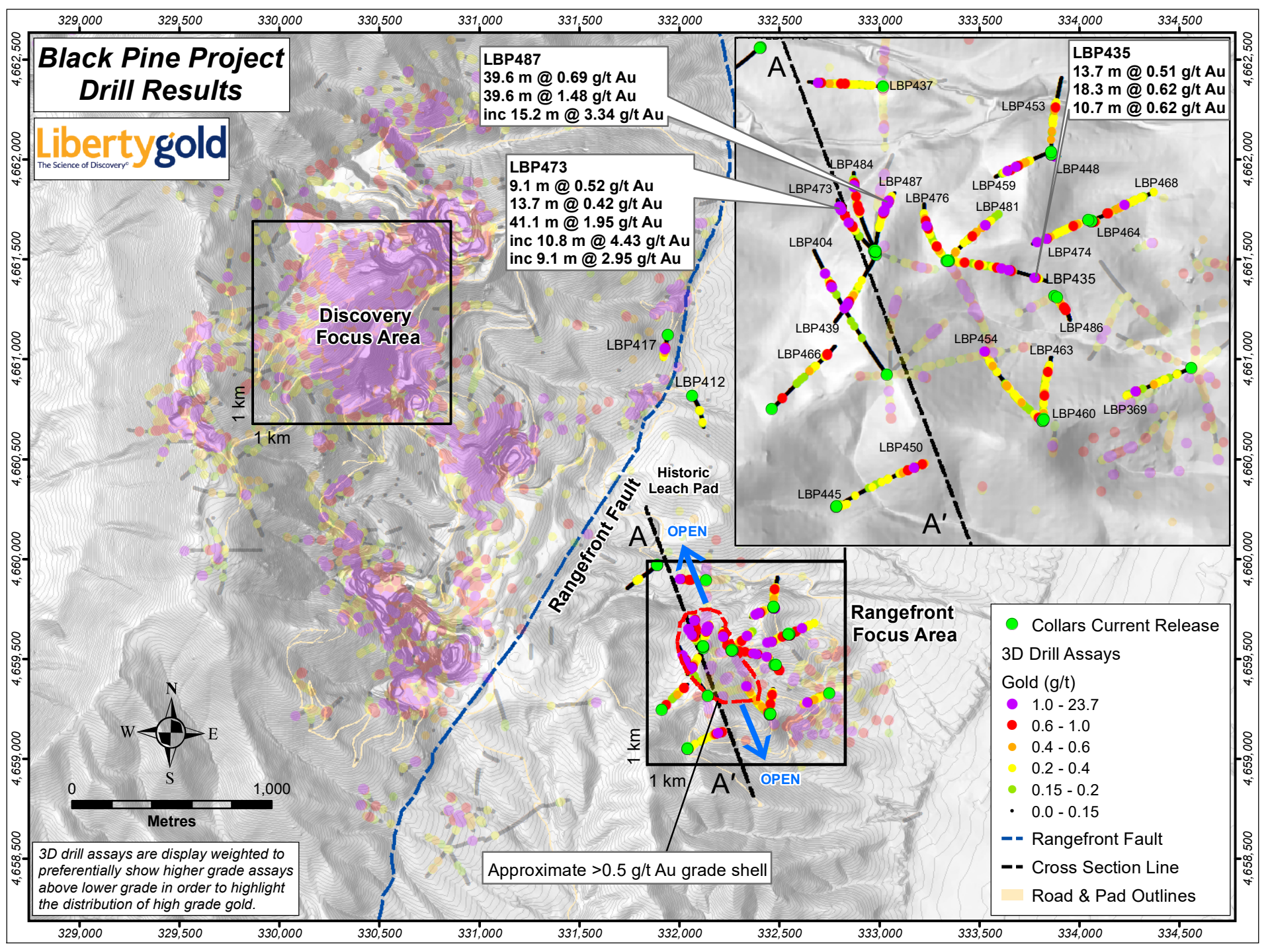


- Collars Current Release
- 3D Drill Assays
- Gold (g/t)
- 1.0 - 23.7
- 0.6 - 1.0
- 0.4 - 0.6
- 0.2 - 0.4
- 0.15 - 0.2
- 0.0 - 0.15
- - - Rangefront Fault
- - - Cross Section Line
- Road & Pad Outlines

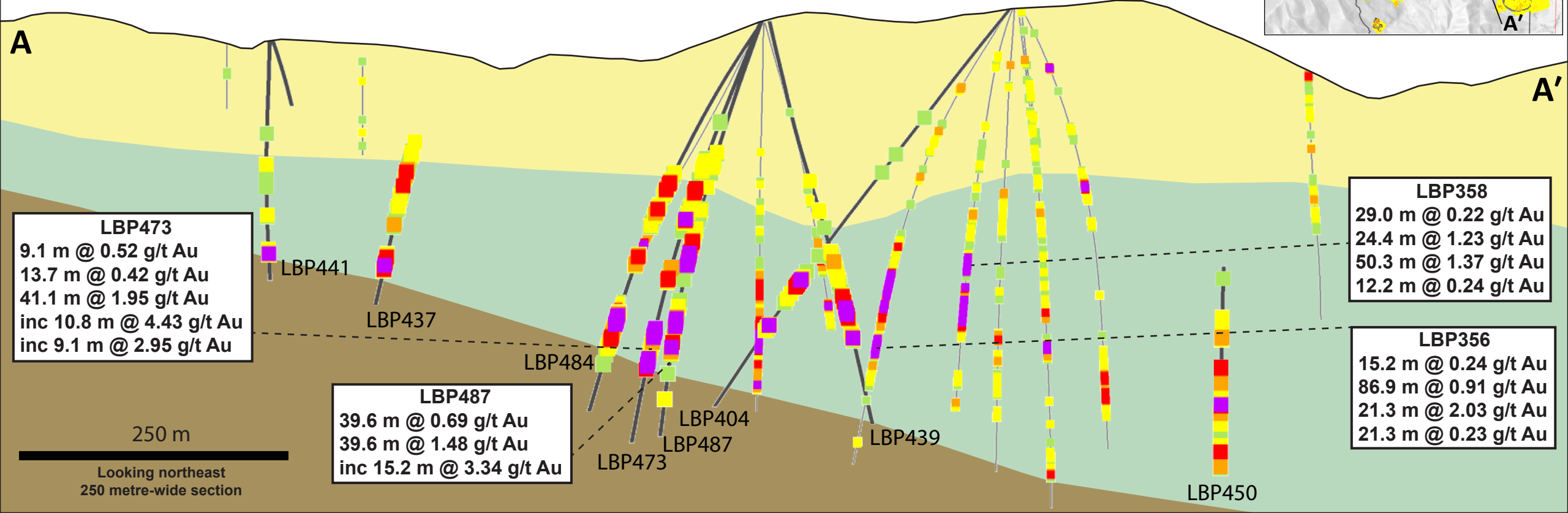
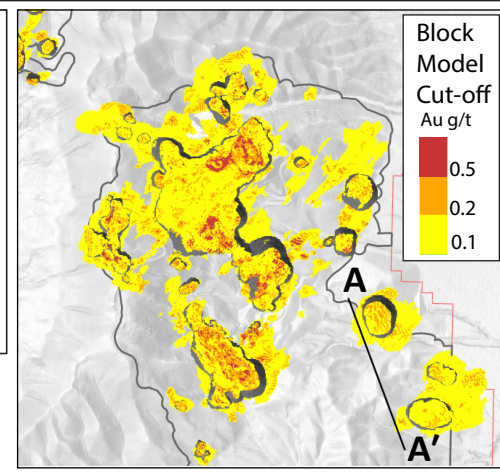
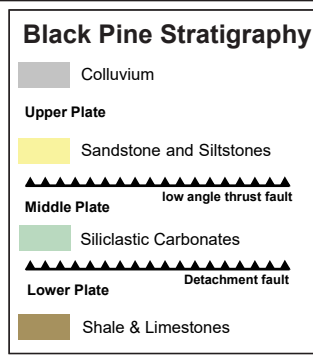
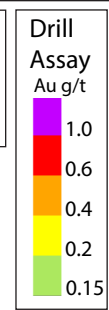


3D drill assays are display weighted to preferentially show higher grade assays above lower grade in order to highlight the distribution of high grade gold.

Approximate >0.5 g/t Au grade shell



Black Pine Rangefront Focus Area Drill Results



LBP473
9.1 m @ 0.52 g/t Au
13.7 m @ 0.42 g/t Au
41.1 m @ 1.95 g/t Au
inc 10.8 m @ 4.43 g/t Au
inc 9.1 m @ 2.95 g/t Au

LBP487
39.6 m @ 0.69 g/t Au
39.6 m @ 1.48 g/t Au
inc 15.2 m @ 3.34 g/t Au

LBP358
29.0 m @ 0.22 g/t Au
24.4 m @ 1.23 g/t Au
50.3 m @ 1.37 g/t Au
12.2 m @ 0.24 g/t Au

LBP356
15.2 m @ 0.24 g/t Au
86.9 m @ 0.91 g/t Au
21.3 m @ 2.03 g/t Au
21.3 m @ 0.23 g/t Au

250 m
Looking northeast
250 metre-wide section