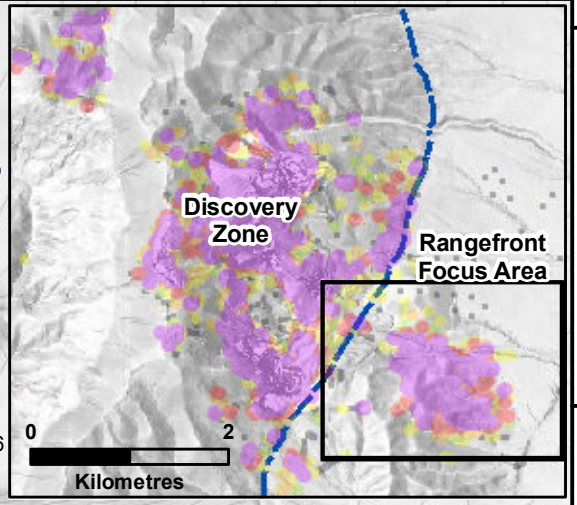


Black Pine Project Rangefront Focus Area 2022 Drill Results

Historic Leach Pad

Rangefront North
Resource Pit



LBP569
19.8 m @ 0.43 g/t Au
30.5 m @ 0.49 g/t Au

LBP568
68.6 m @ 0.39 g/t Au
35.1 m @ 1.13 g/t Au

LBP356
15.2 m @ 0.24 g/t Au
86.9 m @ 0.91 g/t Au
21.3 m @ 2.03 g/t Au
21.3 m @ 0.23 g/t Au

LBP578
71.6 m @ 0.43 g/t Au

LBP577
65.5 m @ 0.30 g/t Au

LBP511CA
100.4 m @ 1.38 g/t Au
inc 12.2 m @ 2.84 g/t Au
inc 11.4 m @ 1.71 g/t Au
inc 2.5 m @ 2.90 g/t Au
inc 4.7 m @ 1.53 g/t Au
inc 10.6 m @ 3.80 g/t Au

- ⊕ Collars Current Release
- Liberty Collars
- Historic Collars

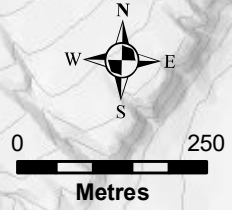
3D Drill Assays

Gold (g/t)

- 1.0 - 23.7
- 0.6 - 1.0
- 0.4 - 0.6
- 0.2 - 0.4
- 0.15 - 0.2
- 0.0 - 0.15

- Cross Section Lines
- Resource Pits
- Road & Pad Outlines
- Rangefront Fault

Rangefront
Resource Pits

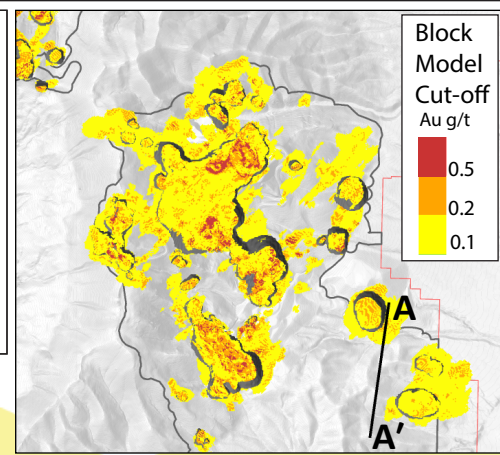
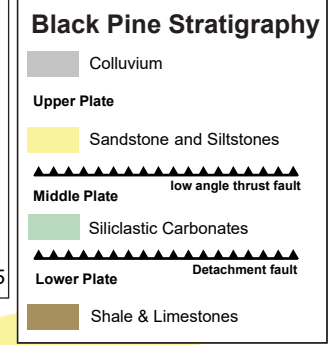
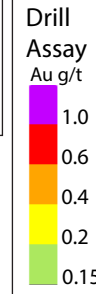


3D drill assays are display weighted to preferentially show higher grade assays above lower grade in order to highlight the distribution of high grade gold.

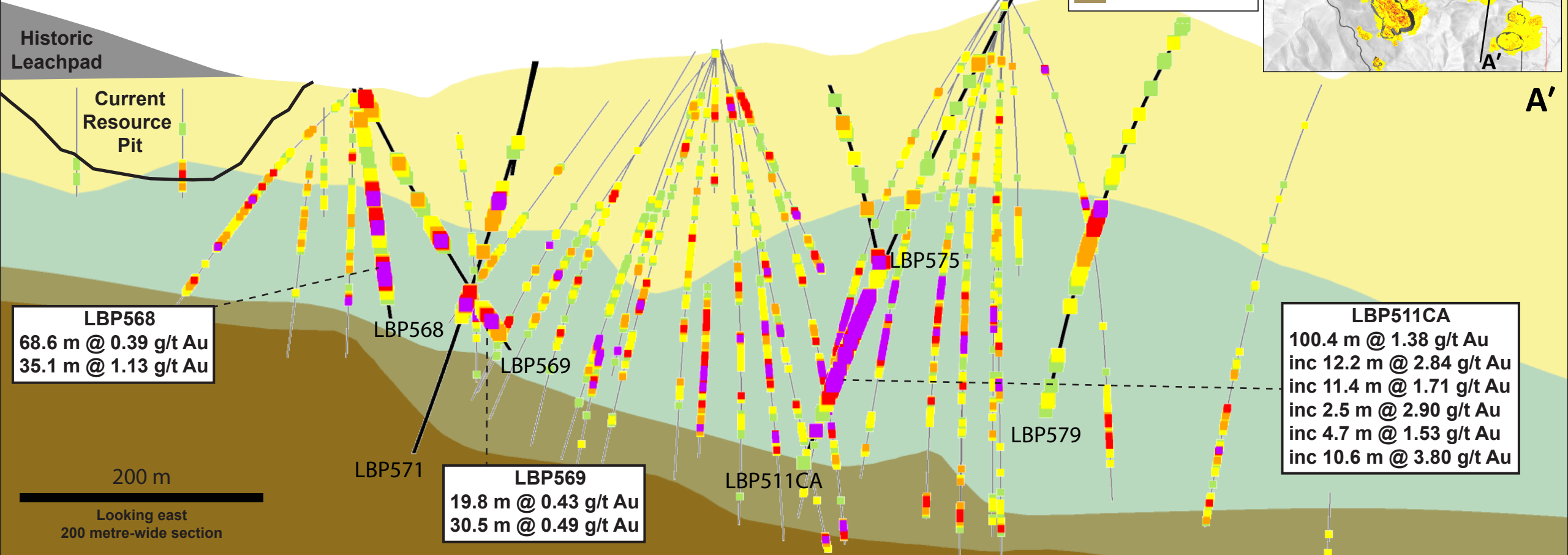
Black Pine Rangefront Focus Area Drill Results

Drill Trace Legend

- Current Release
- Previous Release & Historic Trace



A



A'

LBP568
68.6 m @ 0.39 g/t Au
35.1 m @ 1.13 g/t Au

LBP568

LBP569

LBP569
19.8 m @ 0.43 g/t Au
30.5 m @ 0.49 g/t Au

LBP571

LBP511CA

LBP575

LBP579

LBP511CA
100.4 m @ 1.38 g/t Au
inc 12.2 m @ 2.84 g/t Au
inc 11.4 m @ 1.71 g/t Au
inc 2.5 m @ 2.90 g/t Au
inc 4.7 m @ 1.53 g/t Au
inc 10.6 m @ 3.80 g/t Au

200 m
Looking east
200 metre-wide section