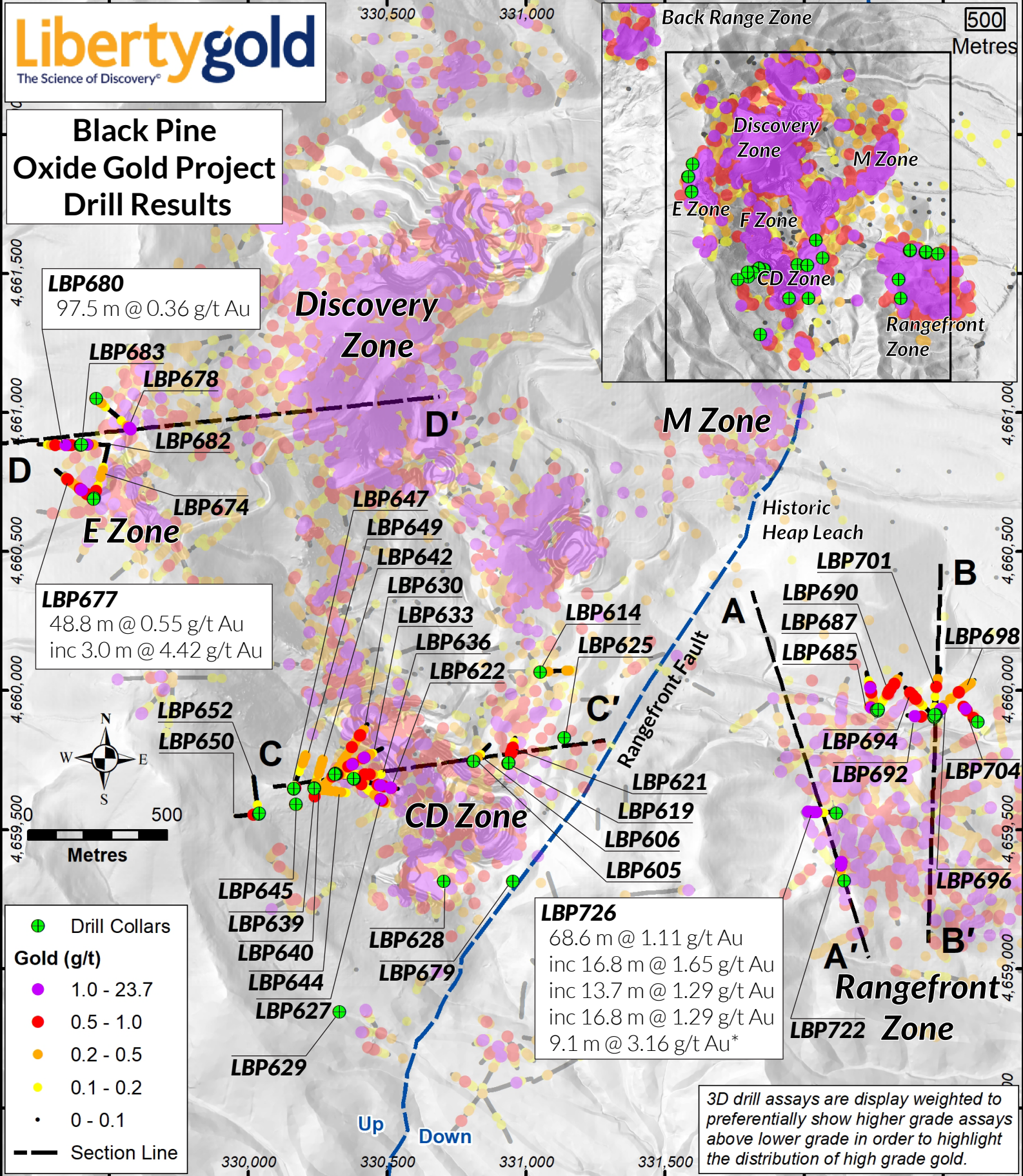


## Black Pine Oxide Gold Project Drill Results



**LBP680**  
97.5 m @ 0.36 g/t Au

**LBP677**  
48.8 m @ 0.55 g/t Au  
inc 3.0 m @ 4.42 g/t Au

**LBP726**  
68.6 m @ 1.11 g/t Au  
inc 16.8 m @ 1.65 g/t Au  
inc 13.7 m @ 1.29 g/t Au  
inc 16.8 m @ 1.29 g/t Au  
9.1 m @ 3.16 g/t Au\*

- Drill Collars
- Gold (g/t)**
- 1.0 - 23.7
- 0.5 - 1.0
- 0.2 - 0.5
- 0.1 - 0.2
- 0 - 0.1
- Section Line

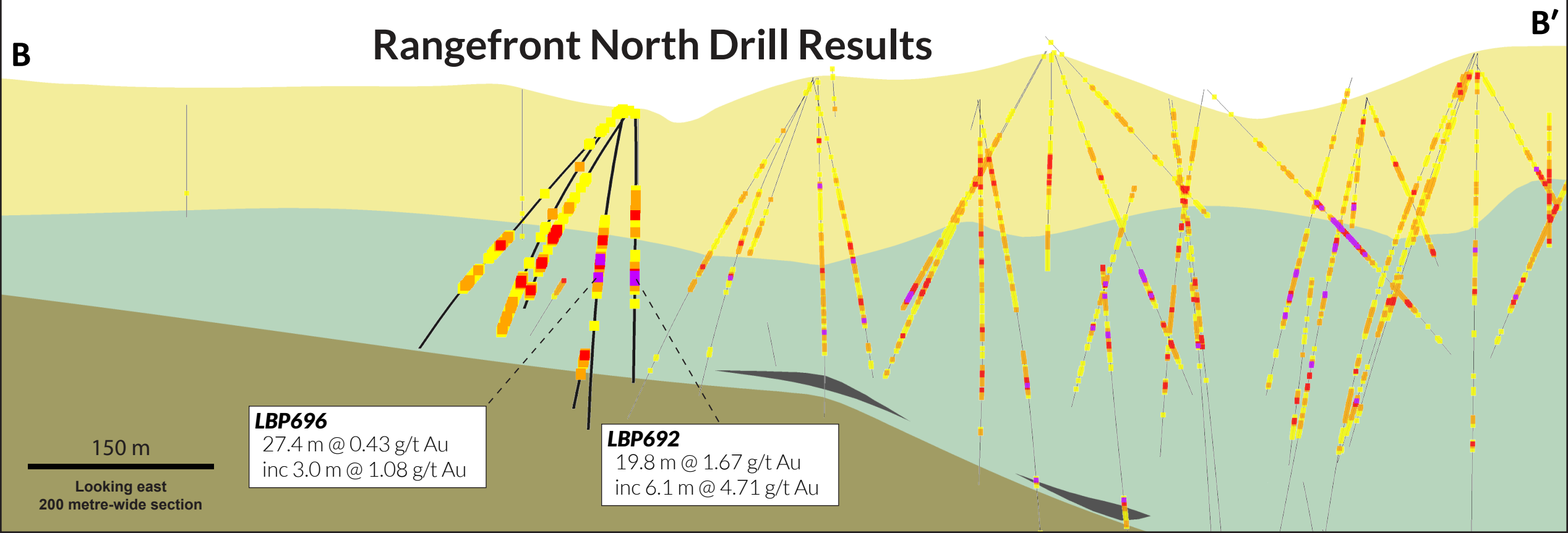
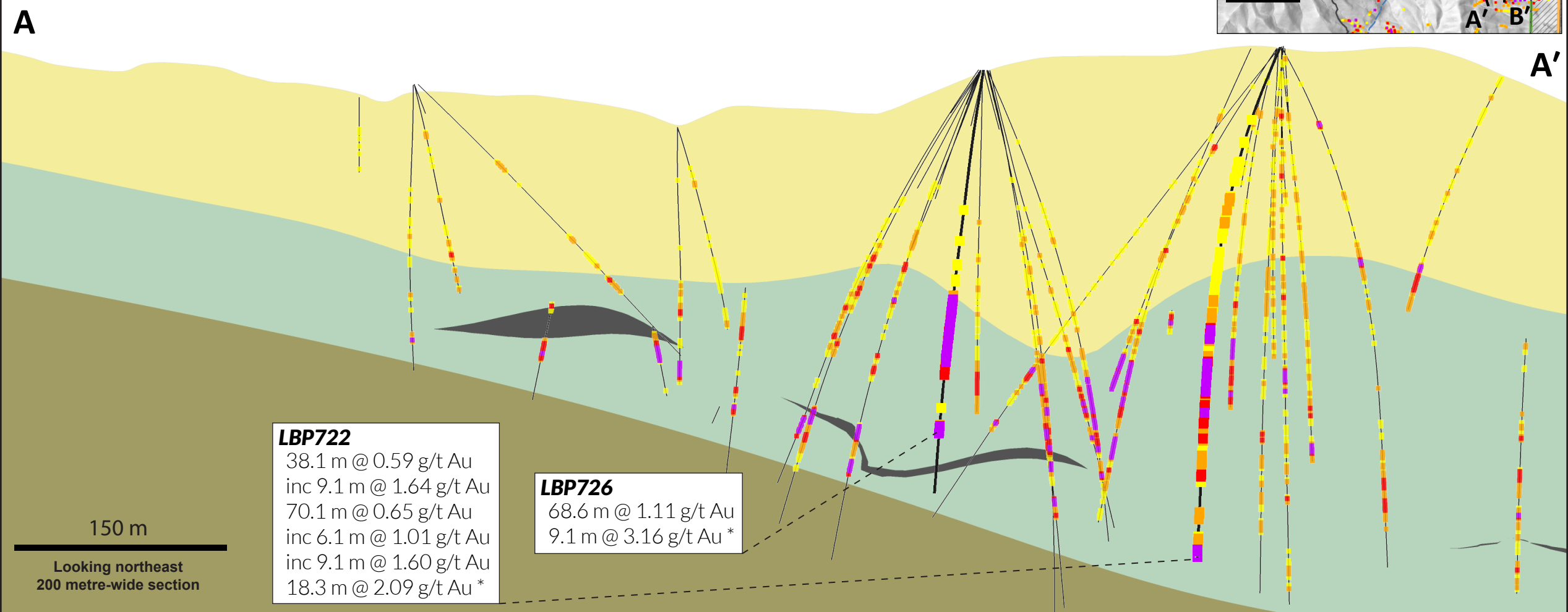
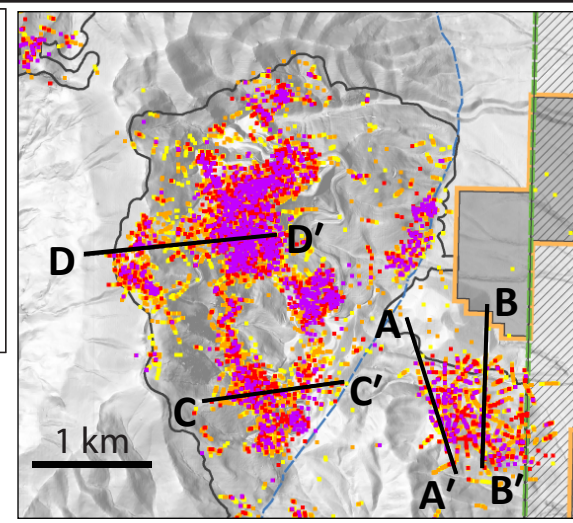
3D drill assays are display weighted to preferentially show higher grade assays above lower grade in order to highlight the distribution of high grade gold.

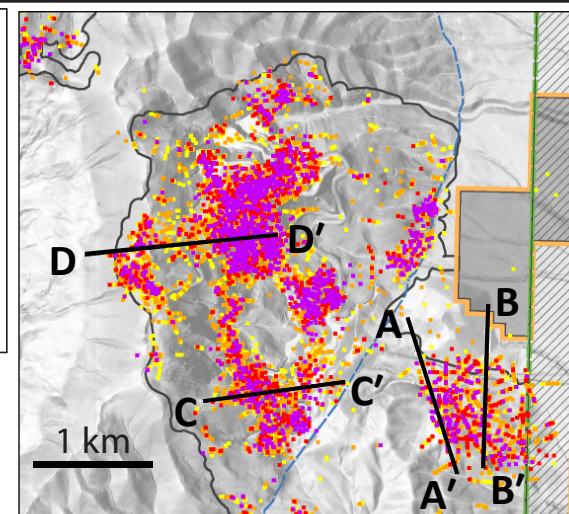
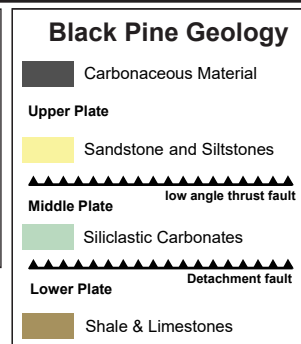
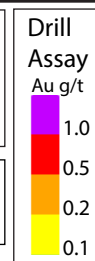
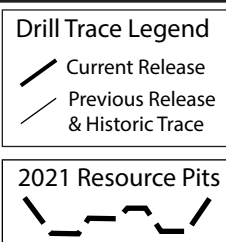
# Black Pine Oxide Gold Project Rangefront West Drill Results

**Drill Trace Legend**  
 — Current Release  
 - - Previous Release & Historic Trace

**Drill Assay Au g/t**  
 1.0  
 0.5  
 0.2  
 0.1

**Black Pine Geology**  
 Carbonaceous Material  
 Upper Plate  
 Sandstone and Siltstones  
 low angle thrust fault  
 Middle Plate  
 Siliclastic Carbonates  
 Detachment fault  
 Lower Plate  
 Shale & Limestones



**C**

## Black Pine Oxide Gold Project CD Zone Drill Results

