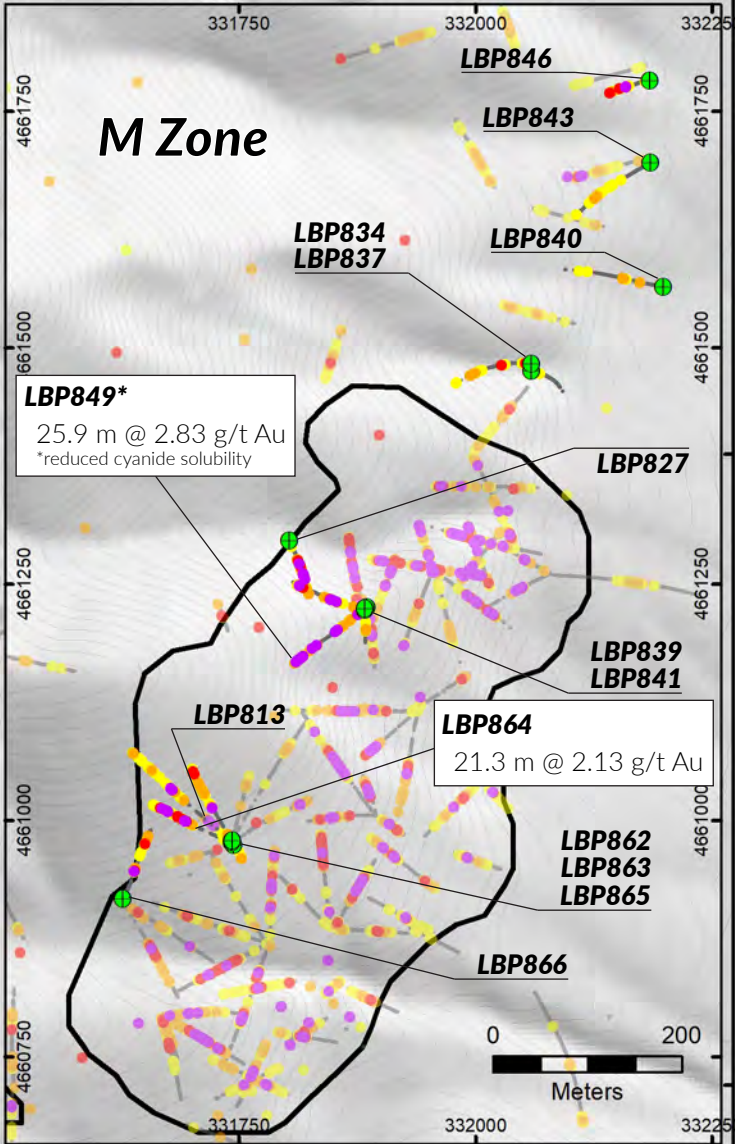
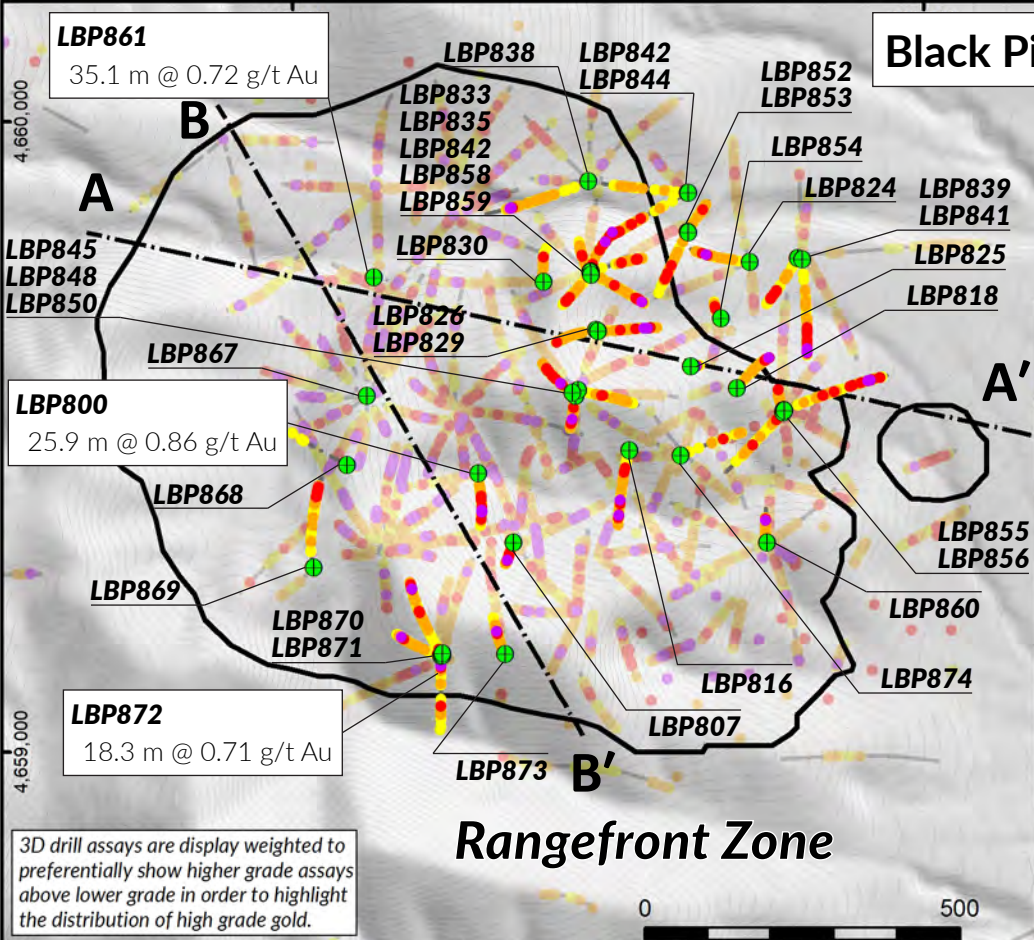
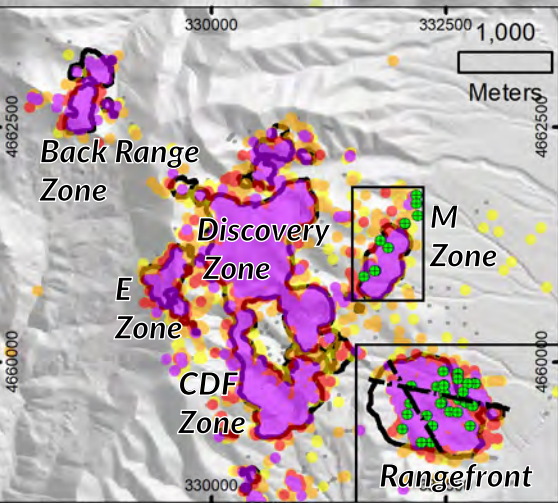


Black Pine Oxide Gold Project Drill Results



3D drill assays are display weighted to preferentially show higher grade assays above lower grade in order to highlight the distribution of high grade gold.

Rangefront Zone



- Drill Collars
- 3D Drill Assays**
- Gold g/t**
- 1.00 - 46.7
- 0.50 - 1.00
- 0.20 - 0.50
- 0.10 - 0.20
- 0.01 - 0.10
- Section Line
- Resource Pits



Black Pine Oxide Gold Project Rangefront Drill Results

Drill Trace Legend
 - Current Release
 - Previous Release & Historic Trace

2023 Resource Pits

Drill Assay Au g/t
 1.0
 0.5
 0.2
 0.1

Black Pine Geology

- Carbonaceous Material
- Upper Plate**
Sandstone and Siltstones
- Middle Plate**
low angle thrust fault
- Siliclastic Carbonates
- Lower Plate**
Detachment fault
- Shale & Limestones

