

328,500

329,000

329,500

# Black Pine Oxide Gold Project Drill Results

# Libertygold



**LBP938**  
38.1 m @ 0.86 g/t Au  
inc 9.1 m @ 2.12 g/t Au

**LBP933**  
**LBP935**

**LBP942**  
12.2 m @ 0.76 g/t Au  
27.4 m @ 0.52 g/t Au

**LBP945**  
51.8 m @ 0.36 g/t Au  
32.0 m @ 3.40 g/t Au  
inc 9.1 m @ 6.74 g/t Au

**LBP943**  
22.9 m @ 1.41 g/t Au  
inc 6.1 m @ 4.28 g/t Au

**LBP957\***  
50.3 m @ 0.37 g/t Au  
76.2 m @ 0.41 g/t Au  
inc 4.6 m @ 1.97 g/t Au

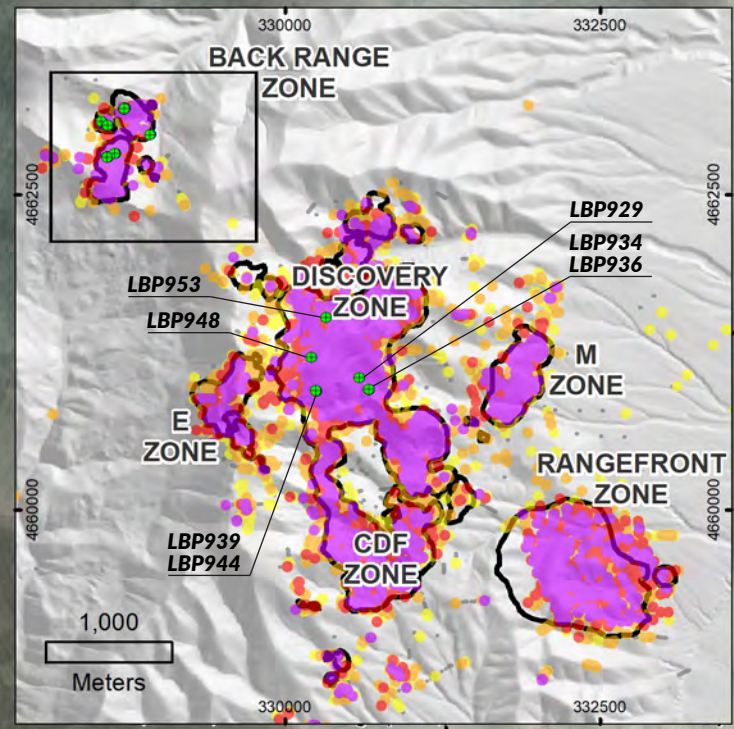
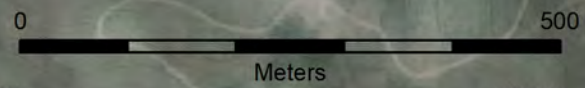
**LBP955\***  
9.1 m @ 0.68 g/t Au  
33.5 m @ 1.36 g/t Au  
inc 6.1 m @ 3.32 g/t Au

**LBP947\***  
10.7 m @ 0.56 g/t Au  
32.0 m @ 0.55 g/t Au

**LBP949**  
**LBP951**

## Back Range Zone

3D drill assays are displayed to preferentially show higher grade assays above lower grade in order to highlight the distribution of high grade gold.



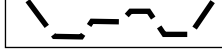
# Black Pine Oxide Gold Project

Libertygold

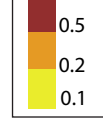
## Drill Trace Legend

- Current Release
- Previous Release & Historic Trace

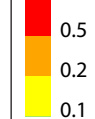
## 2023 Resource Pits



## Block Model Cut-off Au g/t

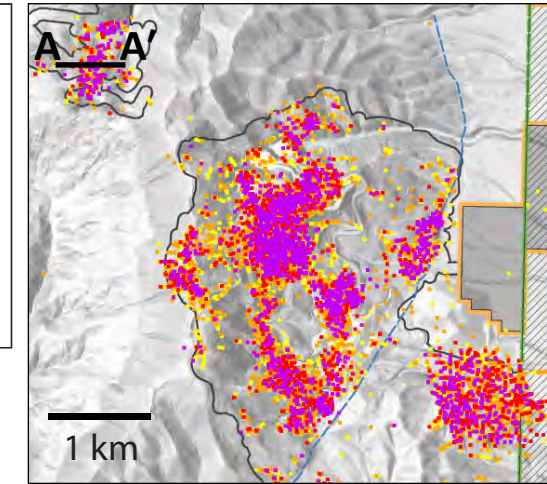


## Drill Assay Au g/t

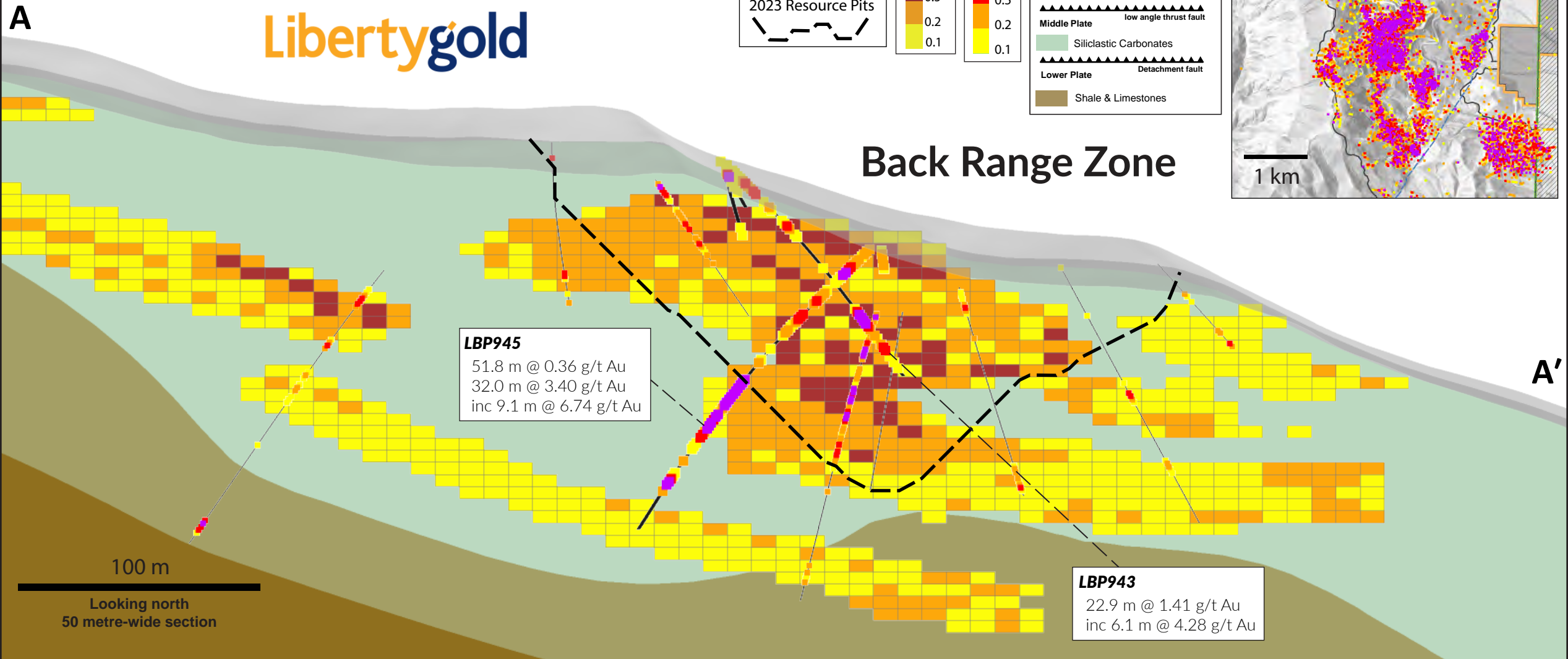


## Black Pine Geology

- Carbonaceous Material
- Upper Plate
  - Sandstone and Siltstones
- Middle Plate
  - low angle thrust fault
- Siliclastic Carbonates
- Lower Plate
  - Detachment fault
- Shale & Limestones



## Back Range Zone



**LBP945**  
51.8 m @ 0.36 g/t Au  
32.0 m @ 3.40 g/t Au  
inc 9.1 m @ 6.74 g/t Au

**LBP943**  
22.9 m @ 1.41 g/t Au  
inc 6.1 m @ 4.28 g/t Au

100 m  
Looking north  
50 metre-wide section