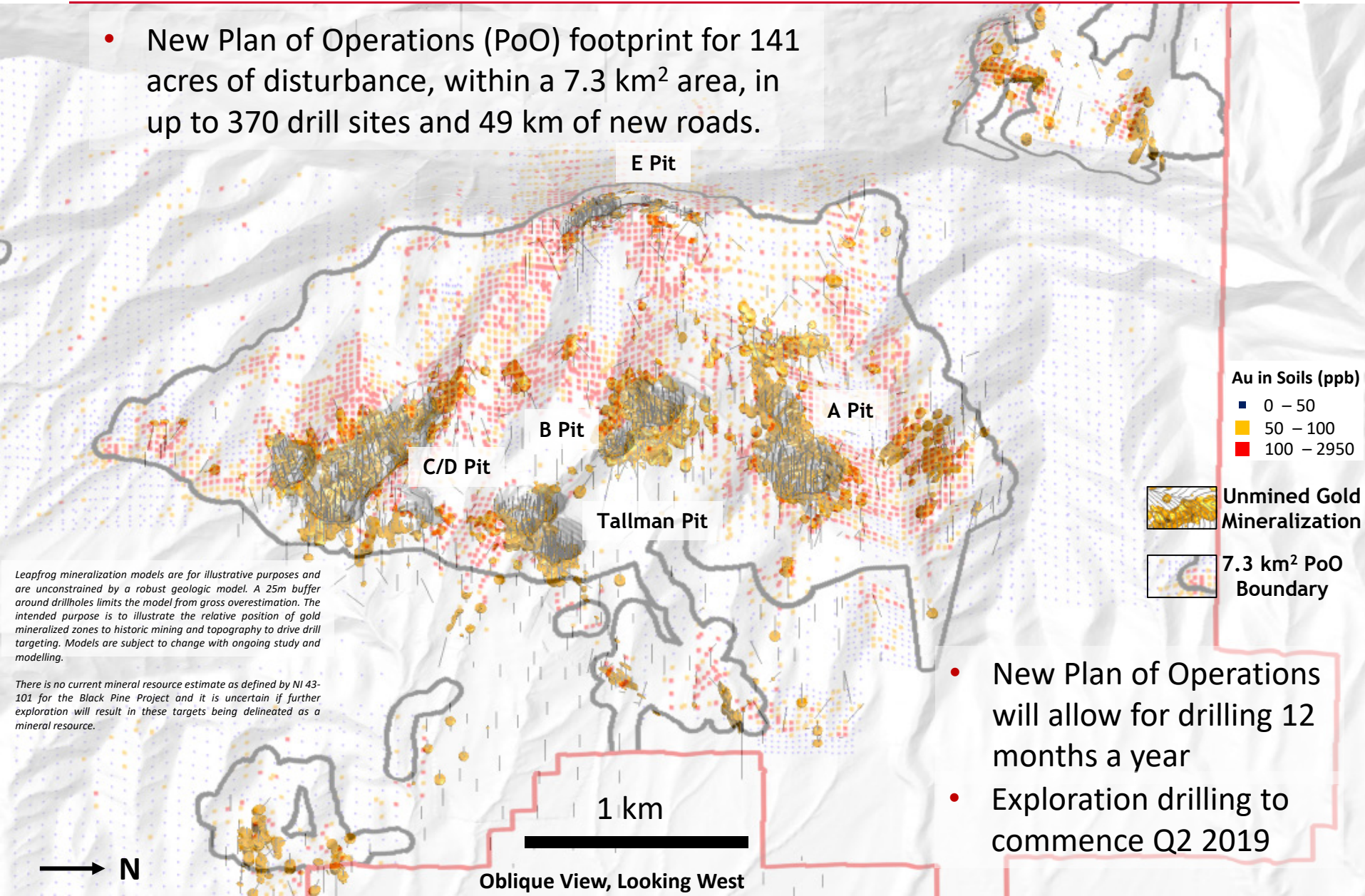


# PLAN OF OPERATIONS & CURRENT OPPORTUNITY

- New Plan of Operations (PoO) footprint for 141 acres of disturbance, within a 7.3 km<sup>2</sup> area, in up to 370 drill sites and 49 km of new roads.



**Au in Soils (ppb)**

- 0 – 50
- 50 – 100
- 100 – 2950

**Unmined Gold Mineralization**

**7.3 km<sup>2</sup> PoO Boundary**

*Leapfrog mineralization models are for illustrative purposes and are unconstrained by a robust geologic model. A 25m buffer around drillholes limits the model from gross overestimation. The intended purpose is to illustrate the relative position of gold mineralized zones to historic mining and topography to drive drill targeting. Models are subject to change with ongoing study and modelling.*

*There is no current mineral resource estimate as defined by NI 43-101 for the Black Pine Project and it is uncertain if further exploration will result in these targets being delineated as a mineral resource.*

- New Plan of Operations will allow for drilling 12 months a year
- Exploration drilling to commence Q2 2019

1 km

→ N

Oblique View, Looking West