

Black Pine Project 2019 Drill Results



3D drill assays are displayed weighted to preferentially show higher grade assays above lower grade in order to highlight the distribution of high grade gold.

- Drill Collars - Current Release
- Drill Collars - Results Pending

Liberty Gold Drill Assays

ppm Au

- 0 - 0.2
- 0.2 - 0.4
- 0.4 - 0.6
- 0.6 - 1.0
- 1.0 - 23.7

■ Road & Pad Outlines

LBP043:
10.7 m @ 1.52 g/t Au
9.1 m @ 4.92 g/t Au
53.3 m @ 4.39 g/t Au

LBP062:
44.2 m @ 3.14 g/t Au

LBP059:
12.2 m @ 0.41 g/t Au
32.0 m @ 0.38 g/t Au
24.4 m @ 1.53 g/t Au

LBP058:
21.3 m @ 0.46 g/t Au
15.2 m @ 0.62 g/t Au
39.6 m @ 1.18 g/t Au

LBP063:
42.7 m @ 0.39 g/t Au
9.1 m @ 4.56 g/t Au

Discovery 1

Discovery 2

Discovery 3

LBP061

LBP062

LBP059

LBP060

LBP063

LBP058

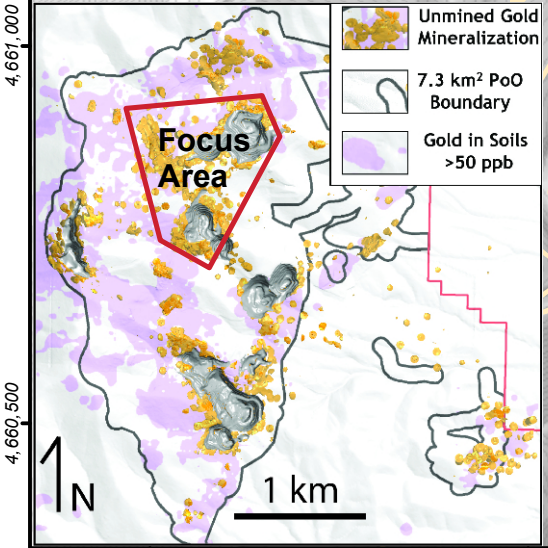
A Pit

B Pit

Tallman Pit

F Anomaly

Feeder Fault Corridor



- Unmined Gold Mineralization
- 7.3 km² PoO Boundary
- Gold in Soils >50 ppb

