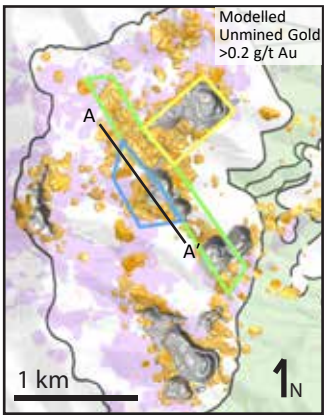
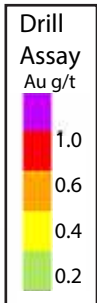
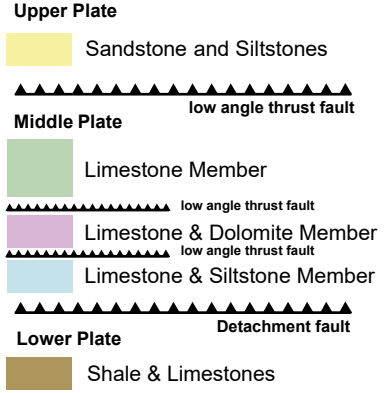


D-3 Long Section Looking Northeast

Drill results strengthen and extend the D-3 mineralization corridor to the east and south

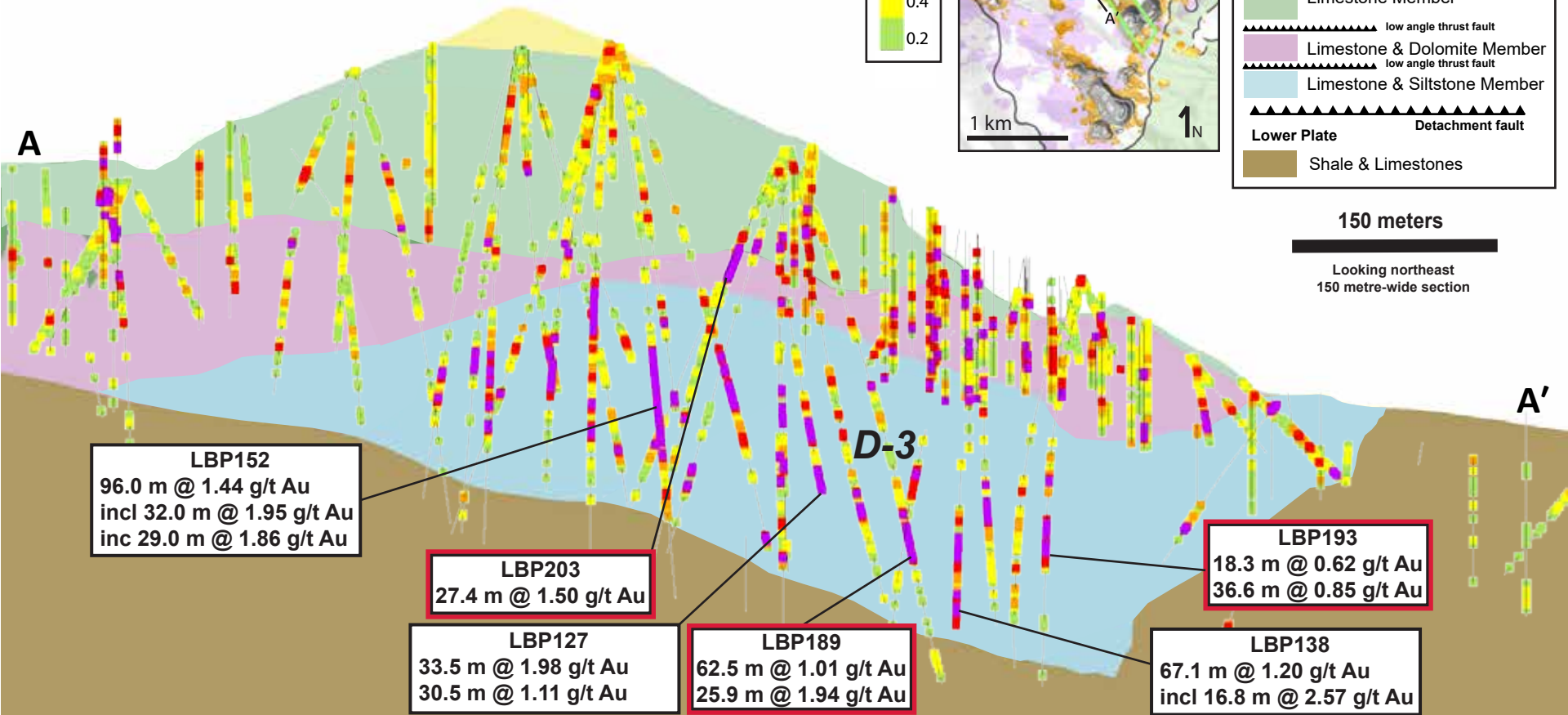


Black Pine Stratigraphy



150 meters

Looking northeast
150 metre-wide section



LBP152
96.0 m @ 1.44 g/t Au
incl 32.0 m @ 1.95 g/t Au
inc 29.0 m @ 1.86 g/t Au

LBP203
27.4 m @ 1.50 g/t Au

LBP127
33.5 m @ 1.98 g/t Au
30.5 m @ 1.11 g/t Au

LBP189
62.5 m @ 1.01 g/t Au
25.9 m @ 1.94 g/t Au

LBP193
18.3 m @ 0.62 g/t Au
36.6 m @ 0.85 g/t Au

LBP138
67.1 m @ 1.20 g/t Au
incl 16.8 m @ 2.57 g/t Au