

Black Pine Project 2021 Drill Results

● Collars Current Release

3D Drill Assays

Gold (g/t)

- 1.0 - 23.7
- 0.6 - 1.0
- 0.4 - 0.6
- 0.2 - 0.4
- 0.15 - 0.2
- 0.0 - 0.15

▭ Drill Permit Boundary

▭ Road & Pad Outlines

LBP377
25.9 m @ 0.58 g/t Au
16.8 m @ 0.85 g/t Au
25.9 m @ 0.88 g/t Au

LBP370
41.1 m @ 0.45 g/t Au
7.6 m @ 0.53 g/t Au
16.8 m @ 0.50 g/t Au

LBP311
25.9 m @ 0.42 g/t Au
15.2 m @ 0.70 g/t Au

LBP303
22.9 m @ 1.73 g/t Au

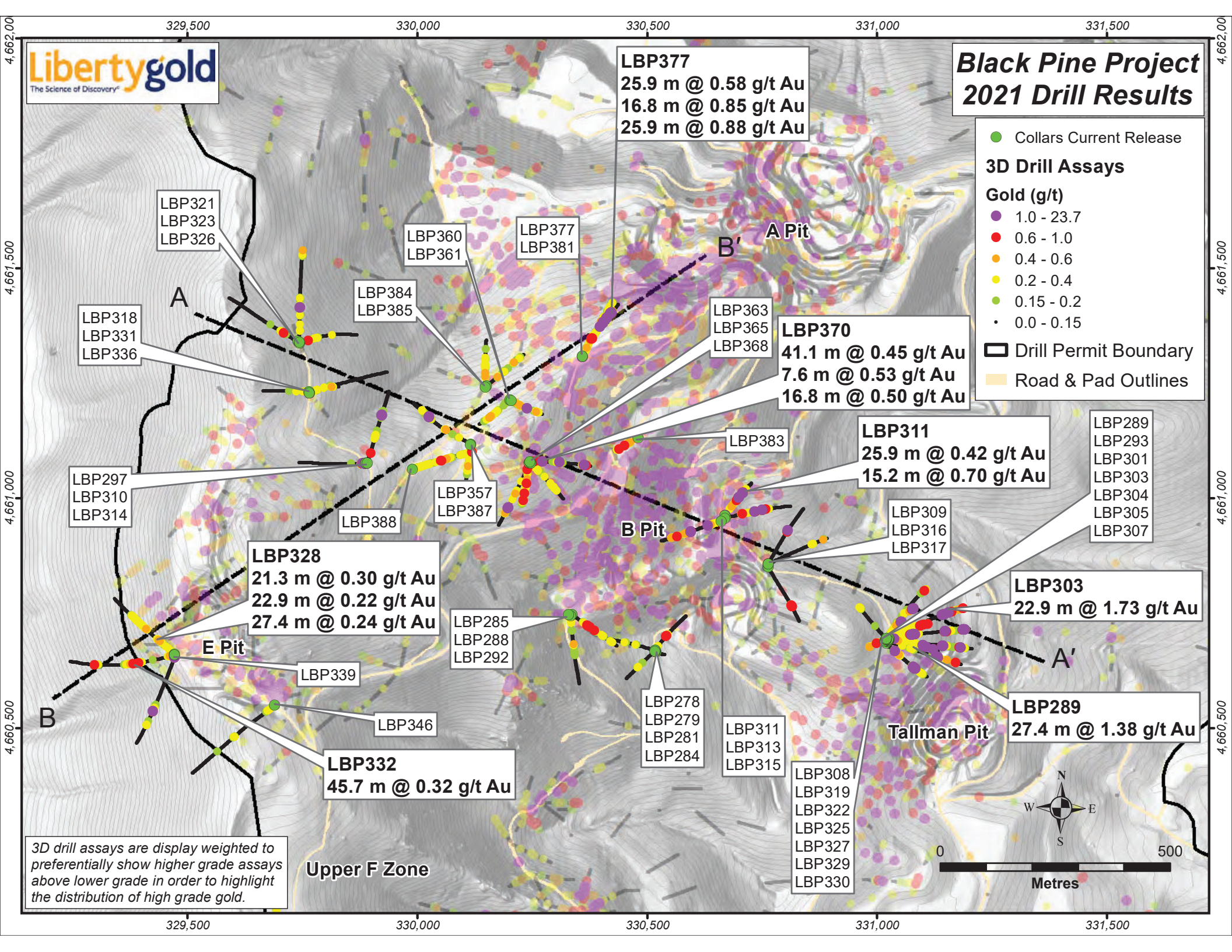
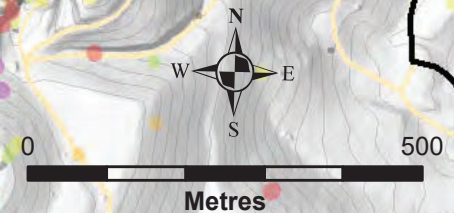
LBP289
27.4 m @ 1.38 g/t Au

LBP328
21.3 m @ 0.30 g/t Au
22.9 m @ 0.22 g/t Au
27.4 m @ 0.24 g/t Au

LBP332
45.7 m @ 0.32 g/t Au

3D drill assays are display weighted to preferentially show higher grade assays above lower grade in order to highlight the distribution of high grade gold.

Upper F Zone

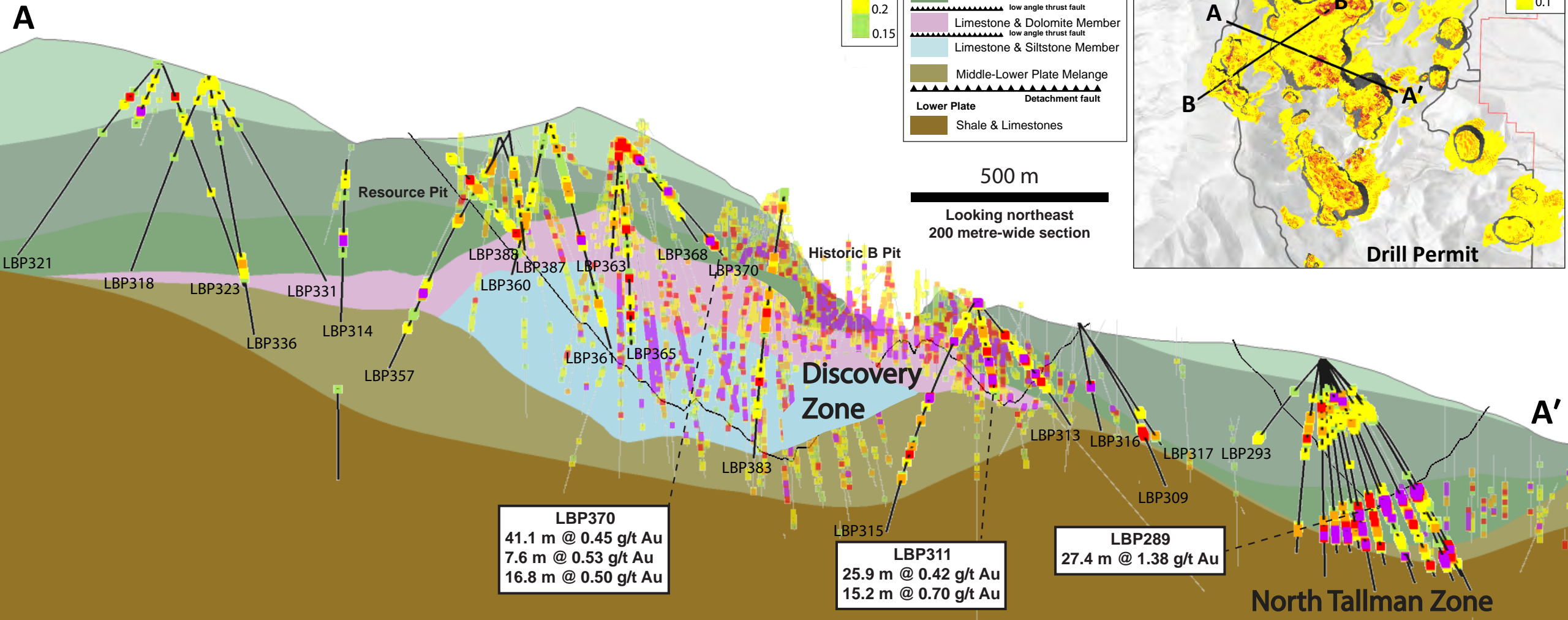
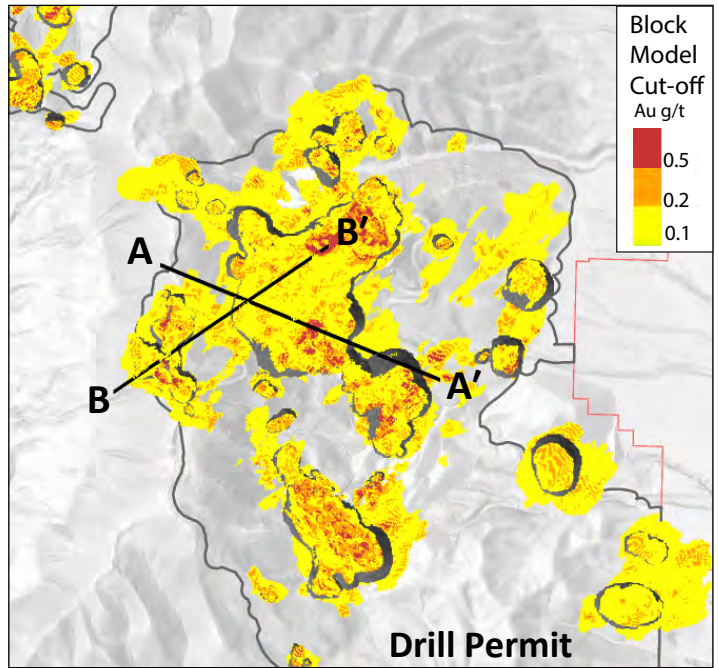
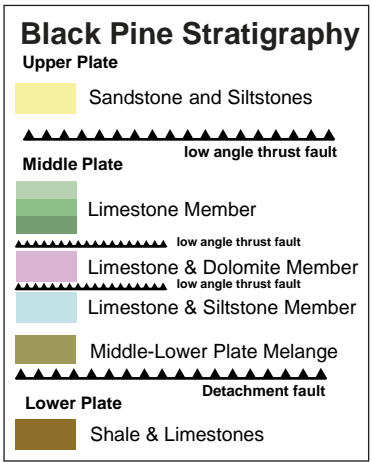
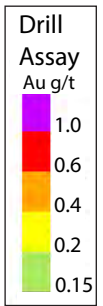


329,500 330,000 330,500 331,000 331,500

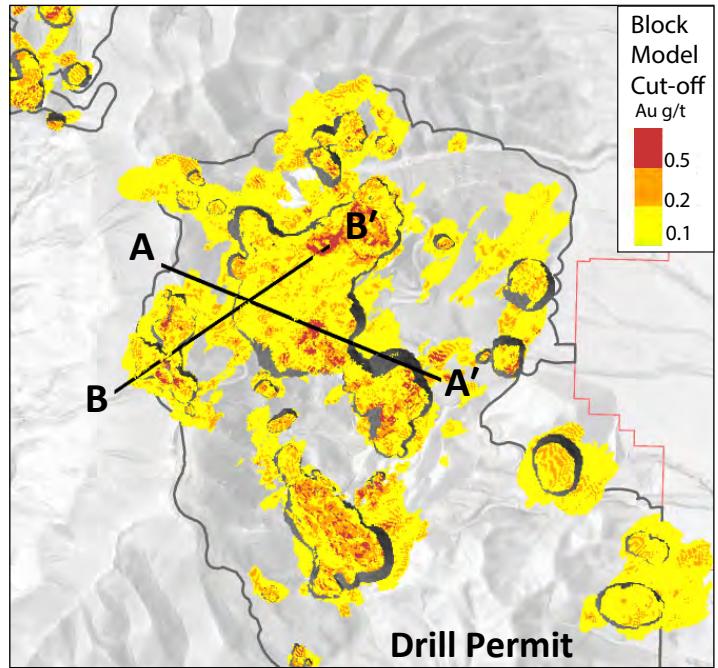
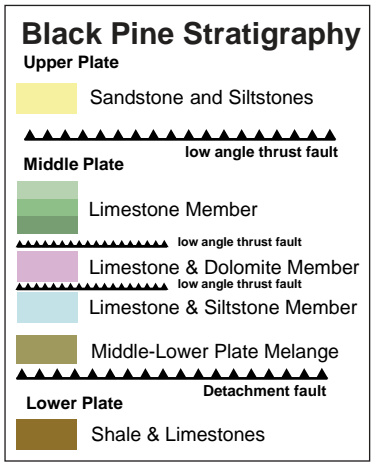
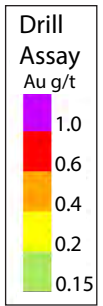
4,662,000
4,661,500
4,661,000
4,660,500

329,500 330,000 330,500 331,000 331,500

Drill Trace Legend
 - Liberty Hole
 - Current Release
 - Historic Hole



Drill Trace Legend
 - Liberty Hole
 - Current Release
 - Historic Hole



300 m
 Looking northwest
 200 metre-wide section

